

TENOR

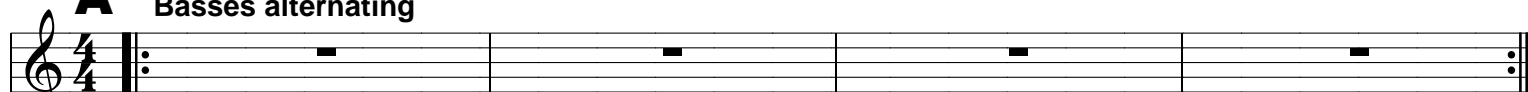
El Hermitaño

(THE HERMIT)

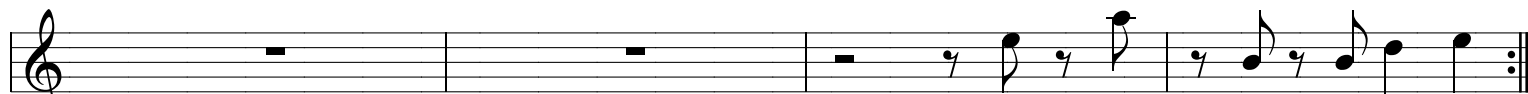
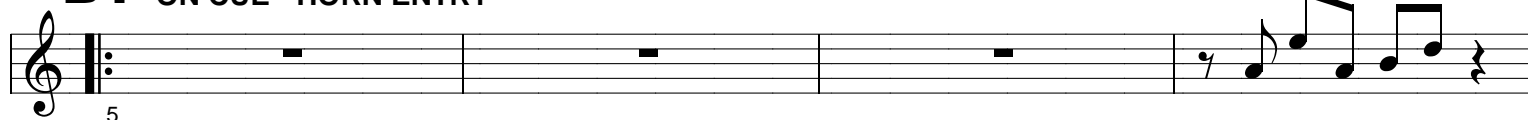
ORCHESTRATED FOR CRUZAO GRUPO MONSTRUOSO

COMPOSED & ARRANGED BY :
BROWMAN ALI

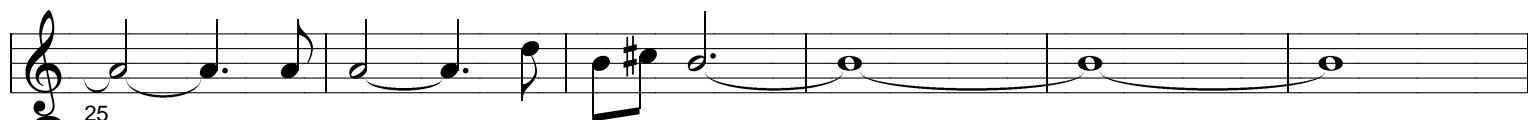
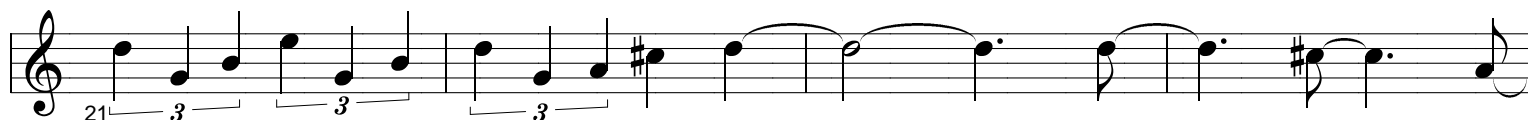
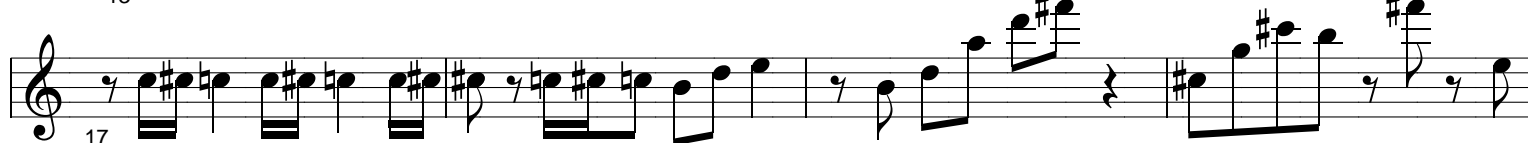
A Partido Alto Basses alternating



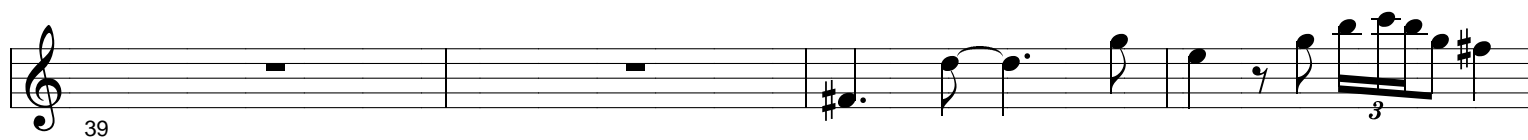
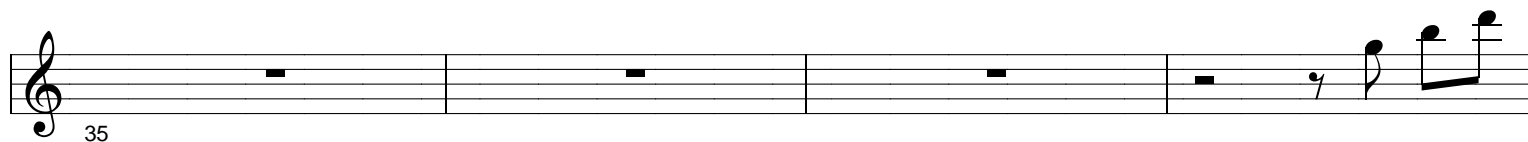
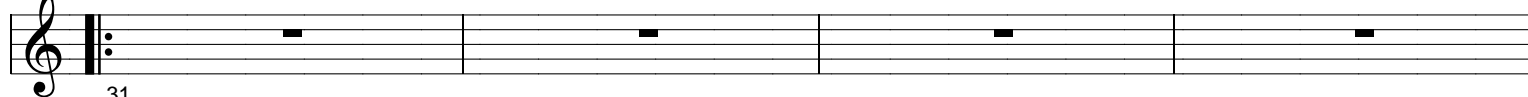
B1 ON CUE - HORN ENTRY



B2



C HEAD - Partido Alto

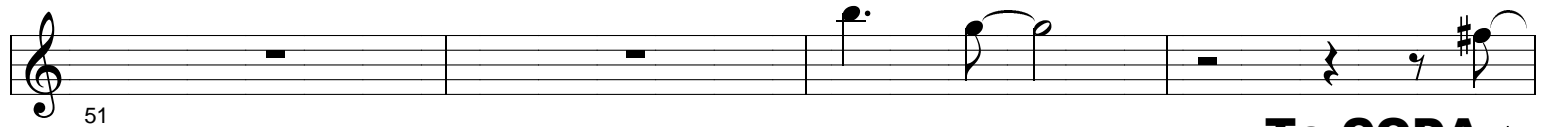


D SAMBA



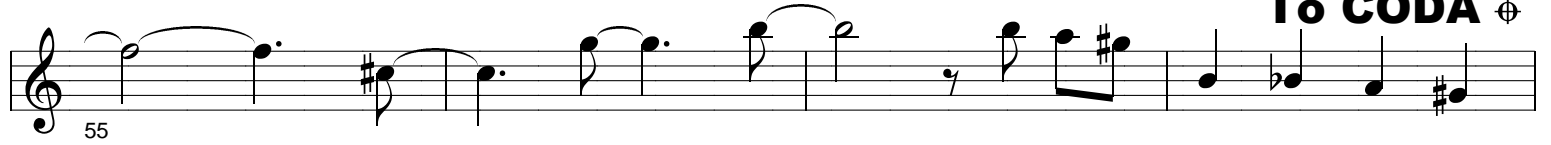
TENOR

51



55

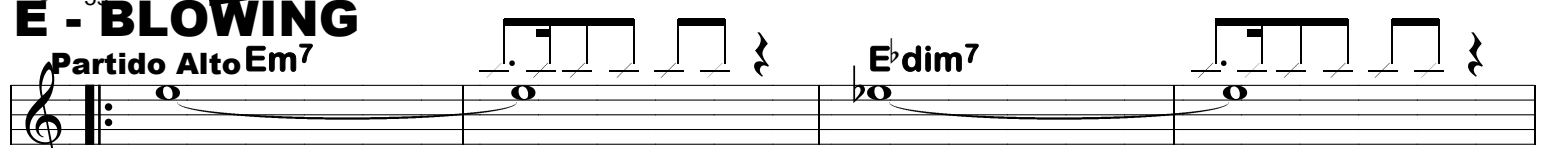
To CODA ⊕



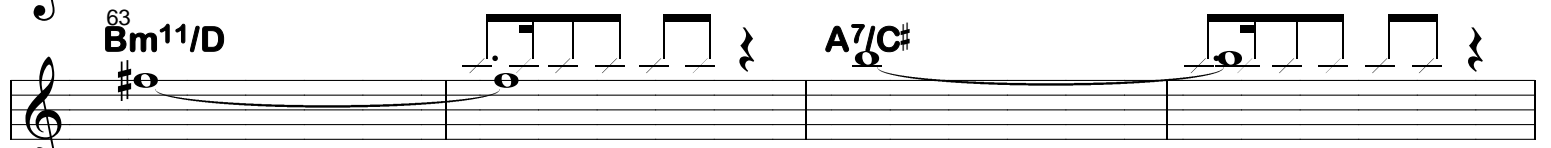
59



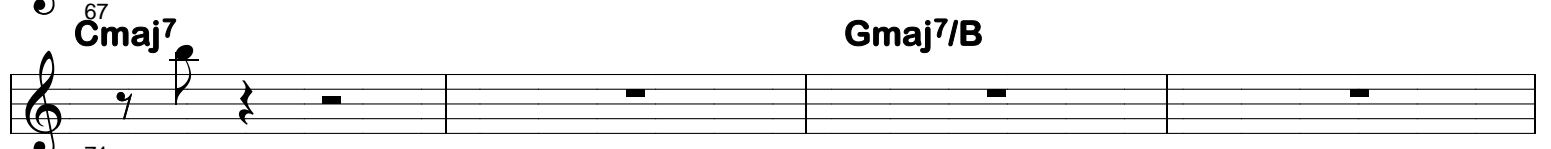
E - BLOWING
Partido Alto Em7



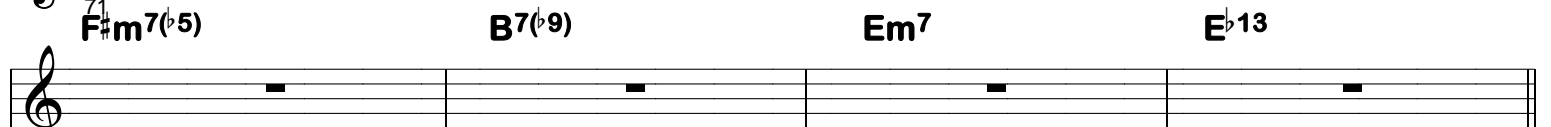
63 Bm11/D



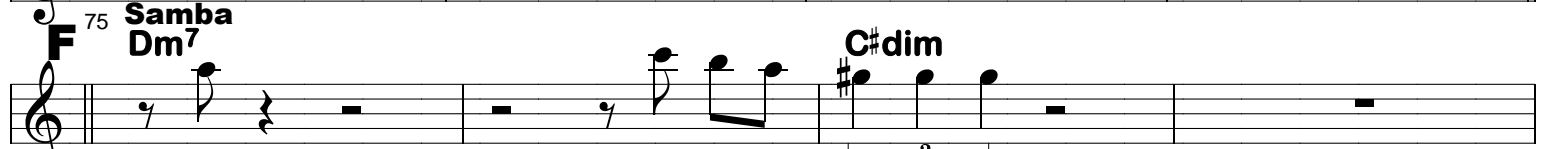
67 Cmaj7



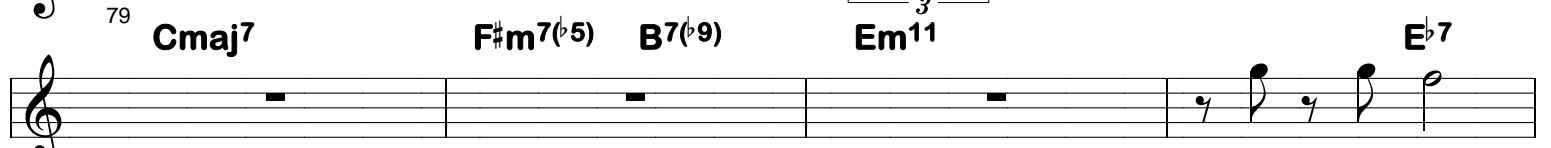
71 F#m7(b5) B7(b9) Em7 Eb13



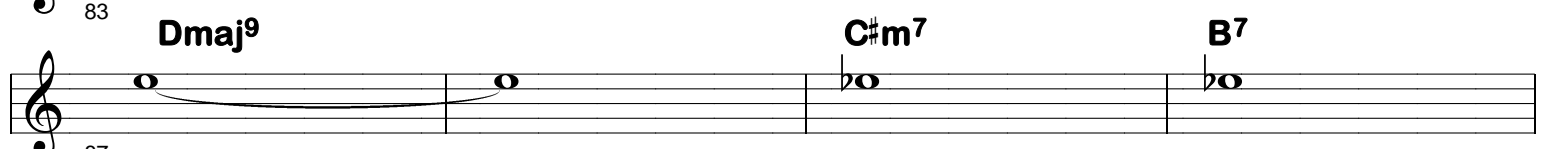
75 Samba F Dm7



79 Cmaj7 F#m7(b5) B7(b9) Em11 Eb7



83 Dmaj9 C#m7 B7



87 E7 Db7 Bb7 G7 F#m7(b5) B7(b9)



91 **DRUM BREAK**



95 **H Coda** ⊕

D.C., cue C (NO REPEATS), take CODA

