

BASS

La Critica

Masón Matizado

M23

JOSÉ ALBERTO "EL CANARIO"
TRANSCRIBED BY MARCUS ALI

A 5 **B^bm⁷** **B^bm⁶** **Cm⁷(^b5)** **F⁷(^b9)** **B^bm⁷** **B^bm⁶** **B^bm⁷** **B^bm⁶**

10 **B^bm** **E^bm⁷** **A^b7** **D^b**

B 14 **F** **B^bm** **B^bm⁷** **B^bm⁶**

18 **F⁷** **B^bm**

C 22 **B^bm** **Cm⁷(^b5)** **F⁷** **B^bm⁷** **B^bm⁶** **G^b7**

26 **F⁷** **G^b7** **F⁷** **G^b7**

30 **F⁷** **F⁷** **B^bm** **B^bm⁶** **B^bm** **B^bm**

D 34 **B^bm⁷** **B^bm⁶** **Cm⁷(^b5)** **F⁷** **Cm⁷(^b5)** **F⁷** **B^bm⁷** **B^bm⁶**

39

BASS

B^bm A^b7 G^b7 F7 F7 Cm7(b5) F7 Cm7(b5) F7

43

B^bm B^bm A^b7 G^b7 F7 F7 B^bm B^bm6

48

E B^bm E^bm Cm7(b5) F7 B^bm B^bm6

53

B^bm E^bm Cm7(b5) F7 B^bm B^bm6

57

F G^b E^bm7 Cm7(b5) F7 B^bm F7

61

G B^bm G^b E^bm7 Cm7(b5) F7

65

H coro B^bm Cm7(b5) F7 B^bm

69

B^bm F7 F7 B^bm

73

B^bm F7 F7 B^bm

guia

77

B^bm G^b Cm7(b5) F7 B^bm

81

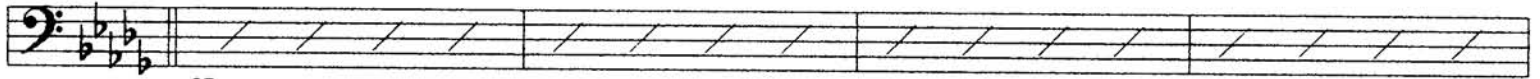
I

B^bm

F7

F7

B^bm



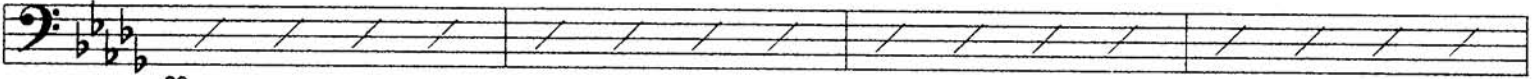
85

B^bm

F7

F7

B^bm



89

mambo

J

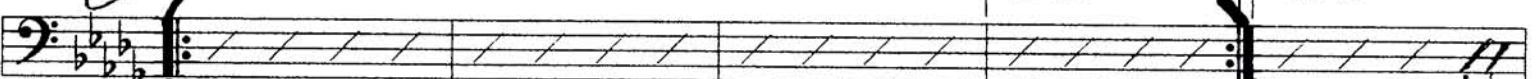
B^bm

F7

F7

1.-3. B^bm

4. B^bm



93

K



98

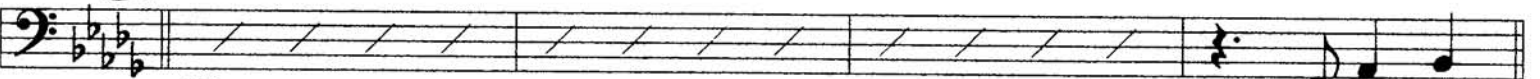
L

B^bm

F7

F7

B^bm



102

M

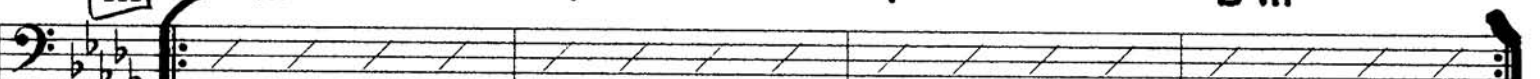
B^bm **guia**

F7

F7

coro

B^bm



106

N

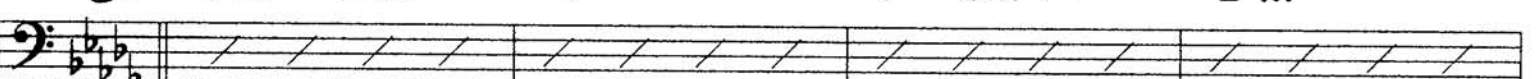
mambo

B^bm E^bm

F7

F7 Cm7(b5)

B^bm



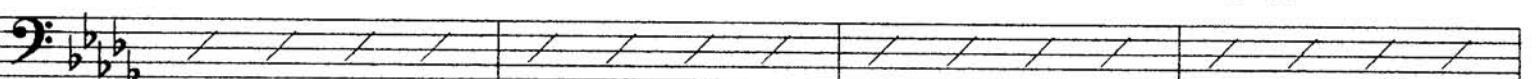
110

B^bm E^bm

F7

F7 Cm7(b5)

B^bm



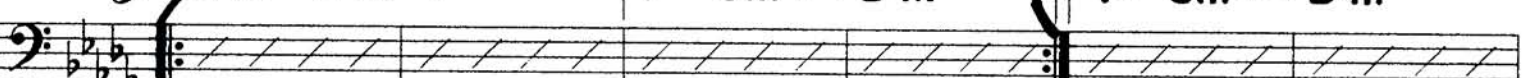
114

O

4x B^bm E^bm F7

1.-3. F7 Cm7(b5) B^bm

4. F7 Cm7(b5) B^bm



118

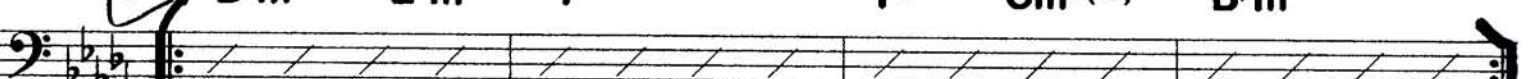
guia

P

B^bm E^bm F7

coro

F7 Cm7(b5) B^bm



124



B^bm E^bm F⁷ F⁷ Cm^{7(b5)} B^bm

128

B^bm E^bm F⁷ F⁷ Cm^{7(b5)} B^bm

132

B^bm E^bm F⁷ F⁷ Cm^{7(b5)} B^bm

136

B^bm E^bm F⁷ F⁷ Cm^{7(b5)} B^bm

140

B^bm A^b G^b 1. F⁷ 2. F⁷ B^bm



144

B^bm B^bm

149

B^bm

153