

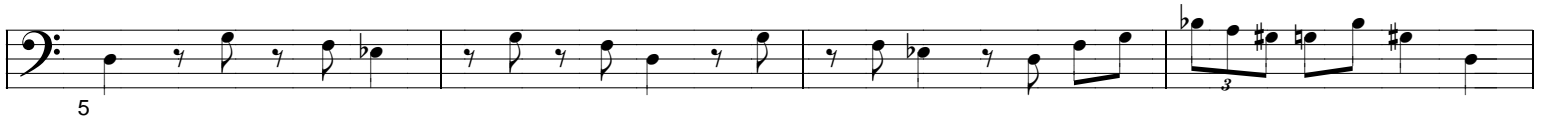
BASS

Vertical

Burning fast - 3-2 rumba clave

COMPOSED & ARRANGED BY :
NICK "BROWMAN" ALI

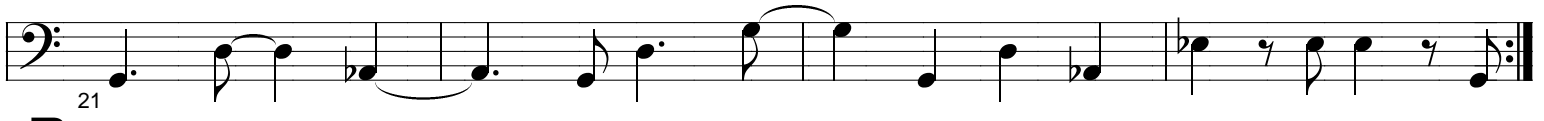
Brown alone



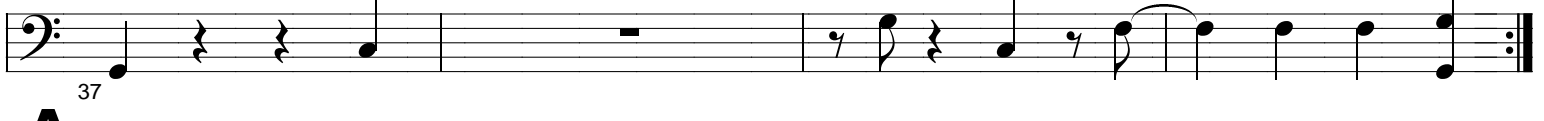
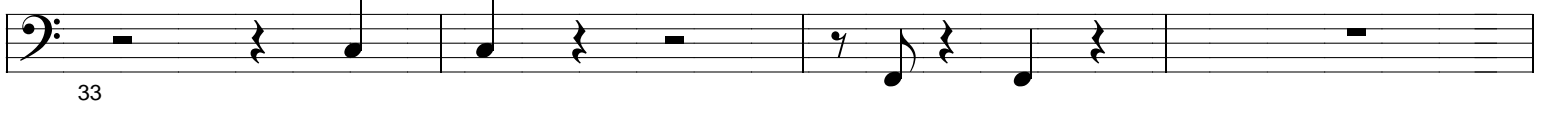
Brown & Marc



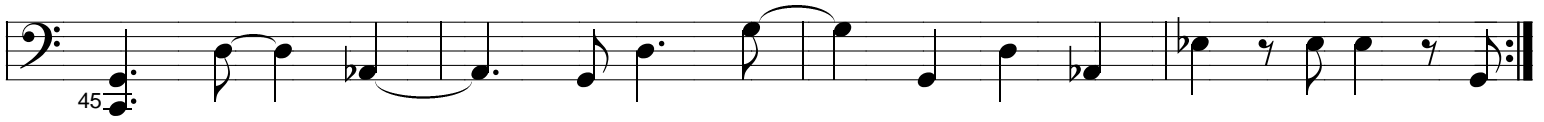
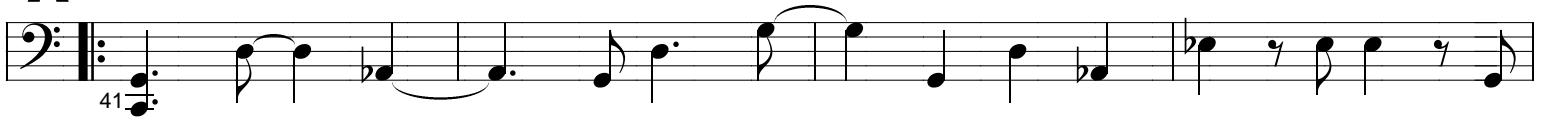
A



B



A



Blowing

NOTE - Bass line is different for blowing.

Cm⁷

49

Musical staff for Cm7, measures 49-52. The staff shows a bass line starting with a double bar line and repeat sign. The notes are: G2 (half), A2 (quarter), Bb2 (quarter), C3 (half), D3 (quarter), Eb3 (quarter), F3 (half), G3 (quarter), F3 (quarter), Eb3 (quarter), D3 (quarter), C3 (half), Bb2 (quarter), A2 (quarter), G2 (half).

Cm⁷

53

Musical staff for Cm7, measures 53-56. The notes are: G2 (half), A2 (quarter), Bb2 (quarter), C3 (half), D3 (quarter), Eb3 (quarter), F3 (half), G3 (quarter), F3 (quarter), Eb3 (quarter), D3 (quarter), C3 (half), Bb2 (quarter), A2 (quarter), G2 (half).

Fm⁷

57

Musical staff for Fm7, measures 57-60. The notes are: C3 (half), D3 (quarter), Eb3 (quarter), F3 (half), G3 (quarter), Ab3 (quarter), Bb3 (half), C4 (quarter), Bb3 (quarter), Ab3 (quarter), G3 (quarter), F3 (half), Eb3 (quarter), D3 (quarter), C3 (half).

Cm⁷

61

Musical staff for Cm7, measures 61-64. The notes are: G2 (half), A2 (quarter), Bb2 (quarter), C3 (half), D3 (quarter), Eb3 (quarter), F3 (half), G3 (quarter), F3 (quarter), Eb3 (quarter), D3 (quarter), C3 (half), Bb2 (quarter), A2 (quarter), G2 (half).

A^b7

65

Musical staff for Ab7, measures 65-68. The notes are: F3 (half), G3 (quarter), Ab3 (quarter), Bb3 (half), C4 (quarter), D4 (quarter), Eb4 (half), F4 (quarter), Eb4 (quarter), D4 (quarter), C4 (half), Bb3 (quarter), Ab3 (quarter), F3 (half).

G7

69

Musical staff for G7, measures 69-72. The notes are: G2 (half), A2 (quarter), B2 (quarter), C3 (half), D3 (quarter), E3 (quarter), F#3 (half), G3 (quarter), F#3 (quarter), E3 (quarter), D3 (half), C3 (quarter), B2 (quarter), A2 (quarter), G2 (half).

C7

73

Musical staff for C7, measures 73-76. The notes are: G2 (half), A2 (quarter), B2 (quarter), C3 (half), D3 (quarter), E3 (quarter), F3 (half), G3 (quarter), F3 (quarter), E3 (quarter), D3 (half), C3 (quarter), B2 (quarter), A2 (quarter), G2 (half).

C7

77

Musical staff for C7, measures 77-80. The notes are: G2 (half), A2 (quarter), B2 (quarter), C3 (half), D3 (quarter), E3 (quarter), F3 (half), G3 (quarter), F3 (quarter), E3 (quarter), D3 (half), C3 (quarter), B2 (quarter), A2 (quarter), G2 (half).