

Piano

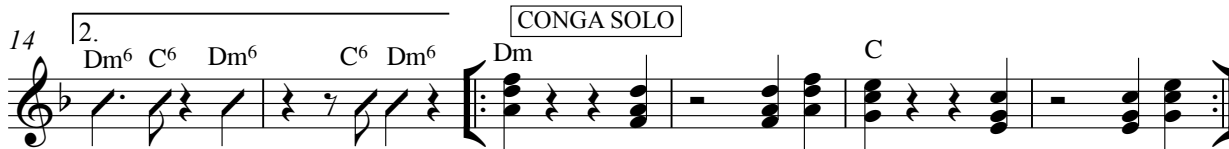
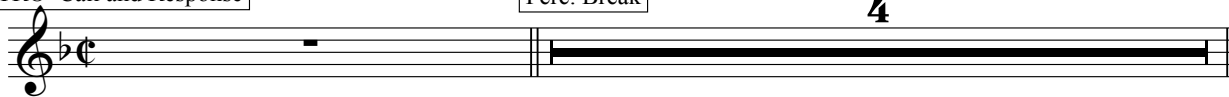
## Piece 1 (Kimbara)

Alegro  $\text{♩} = 160$

INTRO Call and Response

Perc. Break

4

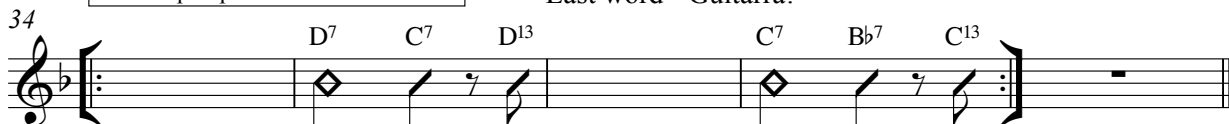


Spoken Word Transition

$\text{♩} = 80$

Slow HipHop - PPP FOR VOCALS

Last word - Guitarra!



## PIANO

## PIECE 2 (PALO 6/8)

 $\text{♩} = 160$ 

ALL INSTRUMENTS IN

4 [A] G F/A C G FMA7 C/E GADD<sup>9</sup> G F/A C G

11 FMA7 G CADD<sup>9</sup> EM7 FMA7 EM7 EM7/C DM7 CMA7 CMA7 G7 DM7 G7 CMA7

ALL INSTRUMENTS IN

21 [ONLY VOCALS AND PERC.] 16 G F/A C G DMA7 G7 CMA7

41 [B] C G C/E C 1. C G C/E C 2. C

50 [C] DM7 C BM7(♭5) Am FMA7/G DM7/F EM7 CMA9/E

58 [ONLY VOCALS AND PERC.] 8

ALL INSTRUMENTS IN

66 [D] EM7 DM9 EM7 1. CMA9 2. CMA9/E

71 - 4 [E] C 1.2. DM7/G G/E FMA7/D 3. G CMA7 DM7/E CMA7

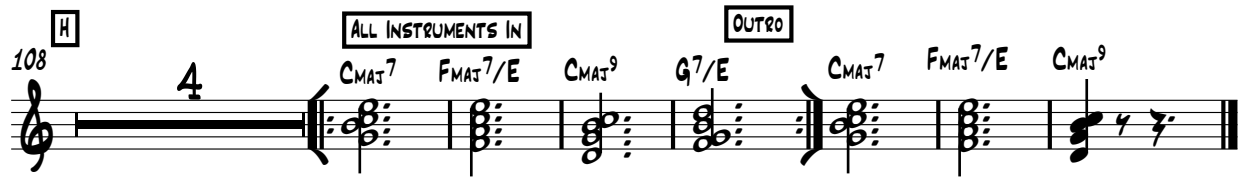
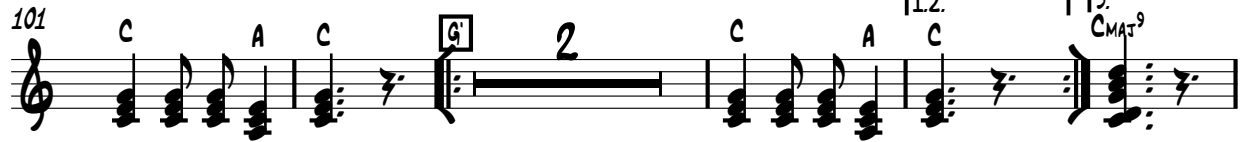
85 [F] CMA7 DM7/E 1.2. CMA7 3. CMA7

91 [G] [TPT AND PERC. ONLY] 10

2

PIANO

3X'S AND BACK TO G



# SCORE

## Piece 2B - Brownlo

♩=100

COMPOSED & ARRANGED BY :  
BROWNMAN ALI

Trumpet

Keys

Bass

G Am<sup>7</sup> Cmaj<sup>9</sup> G<sup>7</sup> Fmaj<sup>7</sup> C/E Gmaj<sup>9</sup>

1.

2.

G Am<sup>7</sup> Cmaj<sup>9</sup> G<sup>7</sup> Fmaj<sup>7</sup> C/E Gmaj<sup>9</sup> Gmaj<sup>9</sup>

5

# Piece 3 (Cumbia)

Ruben Esguerra

Trumpet in B♭

Gaitas Begin Everyone on traditional percussion Open till cue

Synthesizer

Open till cue

5

Tpt.

A

F G Dm F G Dm

Open till cue

Synth.

A

F G Dm F G Dm

Open till cue

9

B

Open till cue to A

F C G Dm F C G Dm

Fade out for OUTRO

Synth.

F C G Dm F C G Dm

Fade out for OUTRO

## SCORE

# Piece 3B - 9 Million

COMPOSED & ARRANGED BY :  
BROWNMAN ALI

$\text{♩} = 160$

Trumpet

Keys

Bass

**Cm<sup>9</sup>** **G<sup>9</sup>** **A<sup>9</sup>** **Cm<sup>9</sup>** **A<sup>7</sup>**

1. 2.

**Cm<sup>9</sup>** **G<sup>9</sup>** **A<sup>9</sup>** **Cm<sup>9</sup>** **A<sup>7</sup>/G** **A<sup>7</sup>**

5

**Cm<sup>9</sup>** **Gm<sup>7</sup>(b13)** **A<sup>9</sup>** **Cm<sup>9</sup>** **A<sup>9</sup>sus<sup>4</sup>**

10

**Cm<sup>9</sup>** **Cm<sup>9</sup>(maj7)** **E<sup>b</sup>m<sup>7</sup>/G**

14

PIANO

# PIECE 4 (CAPOEIRA)

$\text{♩} = 70$

PERCUSSION ONLY

4  
1-4

G

F

1.G

2.G

10

4x's

SPEED UP TEMPO

CONTINUE TO SPEED UP TEMPO GRADUALLY

16 ALLEGRO  $\text{♩} = 120$

FADE OUT ON CUE

# CONCERT

# El Hermitaño

COMPOSED & ARRANGED BY :  
NICK "BROWMAN" ALI

**Dm<sup>7</sup>**

**A** **Dm<sup>7</sup> Flugelhorn** **C<sup>#</sup>dim<sup>7</sup>**

**Am<sup>11</sup>/C** **G<sup>7</sup>/B**

**B<sup>b</sup>maj<sup>7</sup>** **Fmaj<sup>7</sup>/A**

**Em<sup>7</sup>(<sup>b</sup>5)** **A<sup>7</sup>(<sup>b</sup>9)** **Dm<sup>7</sup>** **C<sup>#</sup>13**

**B** **Cm<sup>7</sup>** **C<sup>b</sup>dim**

**B<sup>b</sup>maj<sup>7</sup>** **Em<sup>7</sup>(<sup>b</sup>5)** **A<sup>7</sup>(<sup>b</sup>9)** **Dm<sup>11</sup>** **C<sup>#</sup>7**

**Cmaj<sup>9</sup>** **Bm<sup>7</sup>** **A<sup>7</sup>**

**D<sup>7</sup>** **B<sup>7</sup>** **A<sup>b</sup>7** **F<sup>7</sup>** **Em<sup>7</sup>(<sup>b</sup>5)** **A<sup>7</sup>(<sup>b</sup>9)**

**Solos** **Dm<sup>7</sup> Bass, Alto, Trumpet** **C<sup>#</sup>dim<sup>7</sup>** **Am<sup>11</sup>/C** **G<sup>7</sup>/B** **FINE**

**B<sup>b</sup>maj<sup>7</sup>** **Fmaj<sup>7</sup>/A** **Em<sup>7</sup>(<sup>b</sup>5)** **A<sup>7</sup>(<sup>b</sup>9)** **Dm<sup>7</sup>** **C<sup>#</sup>13**

**Cm<sup>7</sup>** **Bdim** **B<sup>b</sup>maj<sup>7</sup>** **Em<sup>7</sup>(<sup>b</sup>5)** **A<sup>7</sup>(<sup>b</sup>9)** **Dm<sup>11</sup>** **C<sup>#</sup>7**

**Cmaj<sup>9</sup>** **Bm<sup>7</sup>** **A<sup>7</sup>** **D<sup>7</sup>** **B<sup>7</sup>** **A<sup>b</sup>7** **F<sup>7</sup>** **Em<sup>7</sup>(<sup>b</sup>5)** **A<sup>7</sup>(<sup>b</sup>9)**

After last solo D.C. al FINE

# Piece 5 (Indestructible)

Alegro  $\text{♩} = 130$

$\text{Dm}^6$   $\text{Gm}^6$   $\text{Gb}^7(\#9)$   $\text{F}^6$   $\text{Em}^7\flat 5$   $\text{Eb}^9$

5  $\text{Dm}^6$   $\text{F}^9$   $\text{Bbma}^9$   $\text{Eb}^7$   $\text{Dm}^6$   $\text{F}^9$   $\text{Bbma}^7$   $\text{Eb}^9$   $\text{Dm}^6$

10  $\text{Gm}^6$   $\text{Gb}^7(\#9)$   $\text{F}^6$   $\text{Em}^7\flat 5$   $\text{Eb}^9$   $\text{Dm}^6$

14  $\text{Gm}^6$   $\text{A}^6$   $\text{F}^6$   $\text{Eb}^9$

17  $\text{Dm}$   $\text{Gm}^6$   $\text{A}^7$   $\text{Gm}$   $\text{Dm}$   $\text{Gm/A}$

21 4x's TRUMPET SOLO

25 Mambo  $\text{Dm}$   $\text{G}^{13}(\#11)$

29  $\text{A}^{13}$   $\text{Bb}^{13}(\#11)$

33 SPOKEN WORD TRANSITION Last word - Identity! (echo)  $\text{Dm}$  cause establishing who we are!

39 will establish who we will be!  $\text{A}^{13}$   $\text{Bb}^{13}(\#11)$

44

ECHO EFFECT - Rit

47

Dm<sup>6</sup>

Gm<sup>6</sup> A<sup>6</sup> F<sup>6</sup> Eb<sup>9</sup>

The image shows a musical score for two staves. The first staff, starting at measure 44, contains a melodic line with eighth and sixteenth notes, marked 'ECHO EFFECT - Rit'. The second staff, starting at measure 47, begins with a whole note chord (Bb) and is followed by eighth and sixteenth note patterns. Chord markings are provided for measures 47 through 50: Dm<sup>6</sup>, Gm<sup>6</sup>, A<sup>6</sup>, F<sup>6</sup>, and Eb<sup>9</sup>. The piece concludes with a final melodic phrase in measure 50.