

Alcatraz

intro straight 8s

A
mambo B⁻⁷ Gmaj⁷ A⁷ B^{b7}

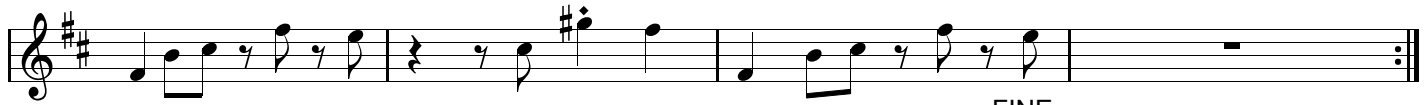
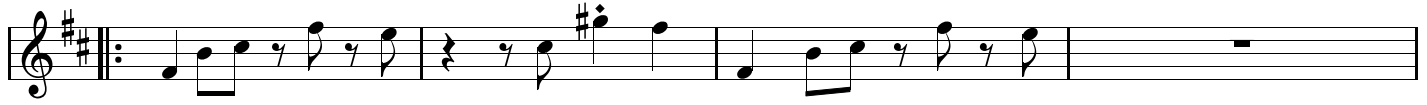
E^{b-7} G^{b-7} A^{b7} G^{7/9}

B⁻⁷ Gmaj⁷ A⁷ B^{b7}

E^{b-7} G^{b-7} A^{b7} G

B

latin funk F#⁷_{sus}⁴ horn ad lib



FINE

Solos on AB, for head out D.C.