

# TRUMPET

# Brownian Motion

$\text{♩} = 175$

COMPOSED & ARRANGED BY :  
BROWNMAN ALI, CHRIS LESSO, IAN DE SOUZA

**A** A1 - Brown plays bass pedal  
A2 - Brown plays wah-wah

Musical notation for section A, measures 1-4. The first staff shows a trumpet line with a double bar line and repeat sign. The second staff shows a bass line starting on measure 5.

**B** 1/2 time Funk section - Ian does whatevs,  
Brown contines to play bassline

Musical notation for section B, measures 5-20. The first staff shows a trumpet line with a double bar line and repeat sign. The second staff shows a bass line starting on measure 9. The third staff shows a trumpet line starting on measure 13. The fourth staff shows a trumpet line starting on measure 17. The fifth staff shows a bass line starting on measure 21.

**C** Ian + Lesso: D'n'B w/ montuno for 8 bars  
THEN Brown: sparse lines

Musical notation for section C, measures 21-30. The first staff shows a trumpet line with a double bar line and repeat sign. The second staff shows a bass line starting on measure 25.



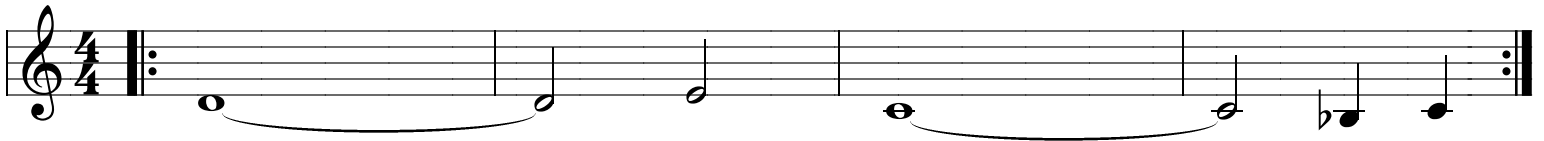
# TRUMPET

# Carlu

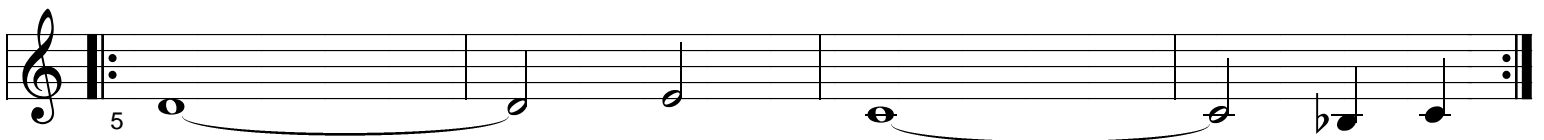
Soundscape.  
Brown plays bass.  
Ian plays high loopy stuff  
Lesso on psydo-samba-ish snare.

COMPOSED & ARRANGED BY :  
BROWNMAN ALI, CHRIS LESSO, IAN DE SOUZA

## A1



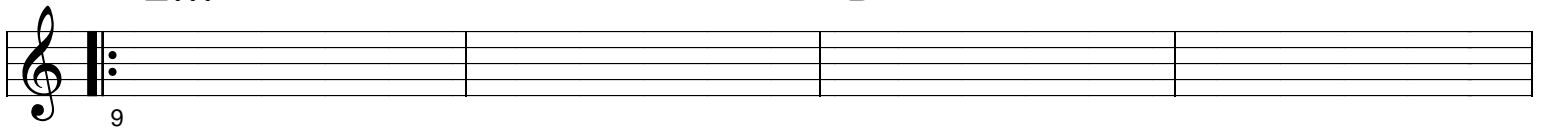
## A2 Add 1/2-time back-beat - band reacts



## B Lesso - KONOKOL & hi-hat unison

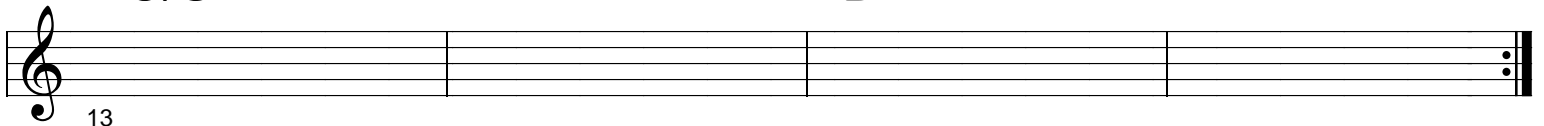
Em

D



C/G

B<sup>7</sup>



# TRUMPET

# House

COMPOSED & ARRANGED BY :  
BROWNMAN ALI, CHRIS LESSO, IAN DE SOUZA

## A Brown plays soundscape effecty stuff

Musical notation for section A, measures 1-8. The notation is in 4/4 time and consists of two staves. The first staff contains measures 1-4, and the second staff contains measures 5-8. The music features a rhythmic pattern of eighth notes and quarter notes with various articulations.

## B

Musical notation for section B, measures 9-12. The notation is in 4/4 time and consists of one staff. The music features a rhythmic pattern of eighth notes and quarter notes with various articulations.

Ian plays slapback w/ delay  
Brown echoes similarly w/ pitchfactor...  
build to breakdown

## C

Musical notation for section C, measures 13-20. The notation is in 4/4 time and consists of one staff. The music features a rhythmic pattern of eighth notes and quarter notes with various articulations.

## D BREAKDOWN - trumpet & drums only / Ian on Kaos

Musical notation for section D, measures 17-20. The notation is in 4/4 time and consists of one staff. The music features a rhythmic pattern of eighth notes and quarter notes with various articulations.

## E - out Everyone plays figures

Musical notation for section E, measures 21-24. The notation is in 4/4 time and consists of one staff. The music features a rhythmic pattern of eighth notes and quarter notes with various articulations.

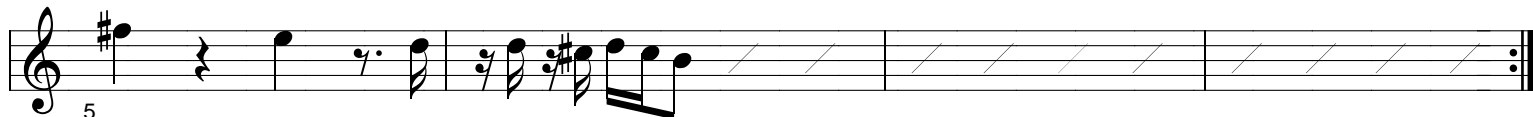
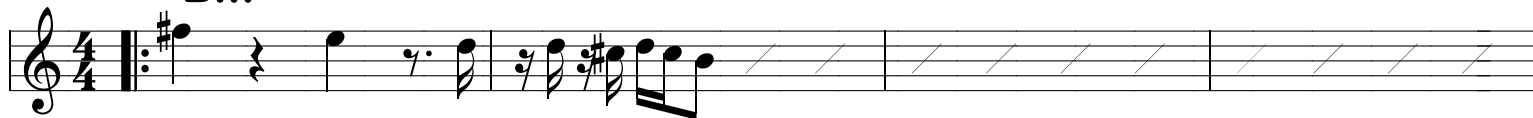
# TRUMPET

# Monster Funk

COMPOSED & ARRANGED BY :  
BROWNMAN ALI, CHRIS LESSO, IAN DE SOUZA

**A** Bass first - Melody after

**Bm**



**B** **Em**

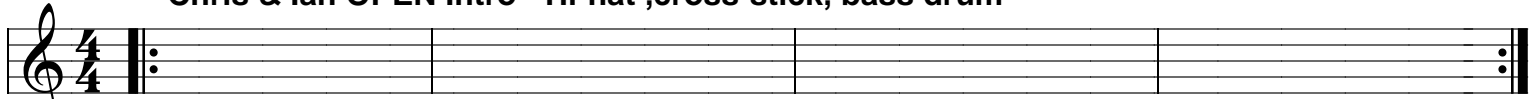


# TRUMPET

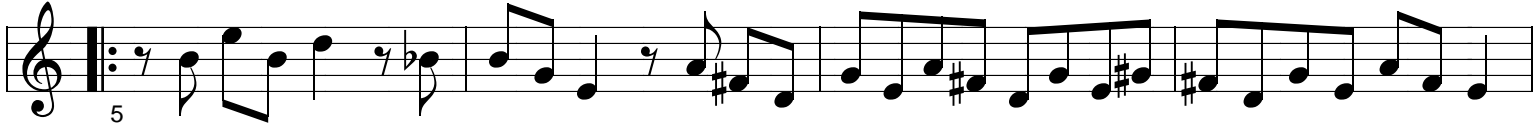
# Now & Zen

COMPOSED & ARRANGED BY :  
BROWNMAN ALI, CHRIS LESSO, IAN DE SOUZA

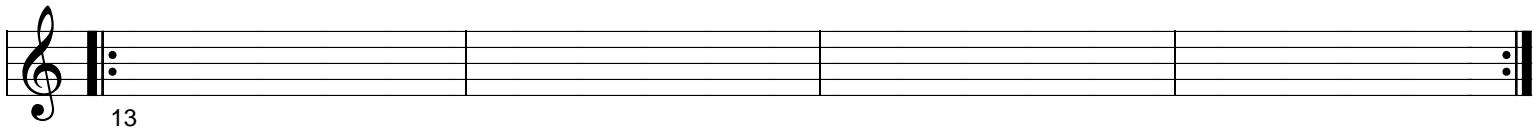
Chris & Ian OPEN Intro - Hi-hat ,cross-stick, bass drum



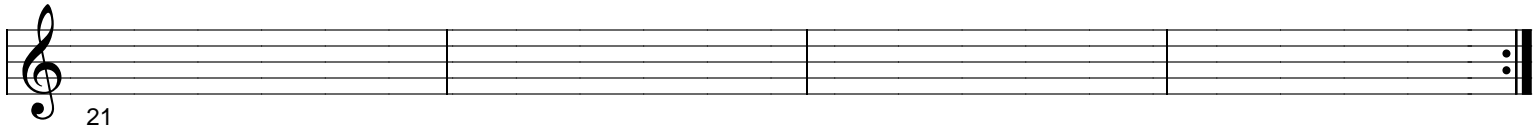
## A



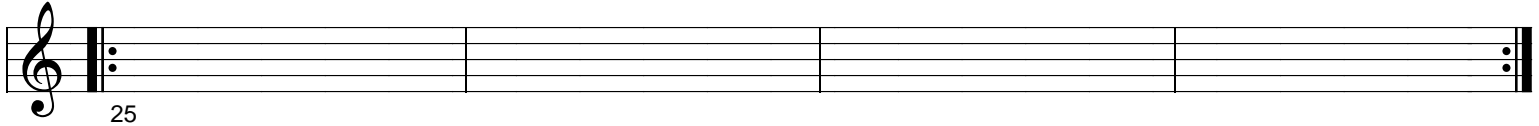
## B1



## B2



## C Drum & Bass



FORM:  
Intro  
Ax4  
B1 (open)  
B2 (melody  
solos)  
C (solos)  
Ax4 (out - last 2x drum solo)

# TRUMPET

# Photek

COMPOSED & ARRANGED BY :  
BROWNMEN ALI, CHRIS LESSO, IAN DE SOUZA

## INTRO Cm

## A Horn Melody 1

## B Horn Melody 2

## C Horn + Bass

## D Dotted bass figures

## E Ian plays 8th note slapback w/ delay Brown plays bass

## F Ian improvises upper 8va chords Brown plays bass

## G A<sup>b</sup> B<sup>b</sup> Cm G<sup>7</sup>

# TRUMPET

# Puzdie 7

COMPOSED & ARRANGED BY :  
BROWMAN ALI, CHRIS LESSO, IAN DE SOUZA

Musical notation for Trumpet part of 'Puzdie 7'. The piece is in 7/4 time. The notation consists of a single staff with a treble clef and a repeat sign at the beginning. The melody is written in a series of eighth and quarter notes. Above the staff, the chord progression is indicated as Gm7, Dm7, Gm7, and Dm7. The piece ends with a double bar line.