

Fri-Aug-05, 2011 @ Trane Studio

Luanda's songs

- Bala Con Bala [mp3](#)
- Jacksoul [mp3](#)
- Tanta Saudade [mp3](#)
- Bonita [mp3](#)
- Ronco Da Cuica [YouTube](#)
- Exoterico [YouTube](#) (Gilberto Gil)

B.E.T. arrangements

- Corcovado [lead sheet](#) | no audio
- Agua De March [lead sheet](#) | [midi](#) | [mp3](#) (chart's empty, just chord changes)
- Samba De Uma Nota So [bass chart](#) | [lead sheet](#) | [midi](#)
- Bananeira [bass chart](#) | [lead sheet](#) | [mp3](#) (audio is Bebel Gilberto)
- Felicidade [lead sheet](#) | [YouTube](#) (we're doing this Hendrik Muerkens arrangement)
- Chega De Saudade [lead sheet](#) | [midi](#) | [mp3](#) (Colin - important drum break)
- Agua De Beber [lead sheet](#) | [midi](#)
- Insensitiz (How Insensitive) - let's do this in Cmin for Luanda

Bb LEAD SHEET

Corcovado

ARRANGED FOR PERMUTACAOs

BY: ANTONIO CARLOS JOBIM
ARRANGED BY: NICK "BROWNMAN" ALI

A1

E7/B

B^bdim



Am7

D7sus4

Gdim

Gmaj7



A2

Gm7

C7

F#m7

B7(b13)



E7

Em7

B^bdim



B

E7/B

B^bdim



Am7

D7sus4

Gdim

Gmaj7



C

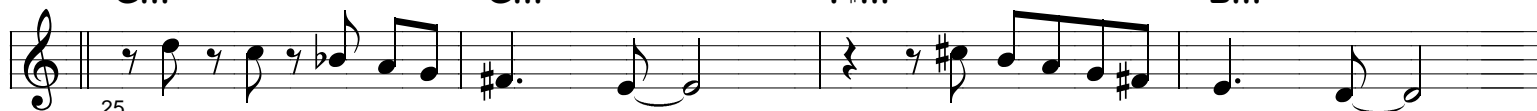
Energy increase!!

Gm7

Gm6

F#m7

Bm7



Em7

A7(b9)

F#m7

B7



Em7

A7(b9)

D

D

F7

Em7

E^b7



Cha-cha-cha... eventually double-time feel

Bb LEAD SHEET

Aguas De Marco

ARRANGED FOR PERMUTACAO S

BY: ANTONIO CARLOS JOBIM
ARRANGED BY: NICK "BROWNMAN" ALI & ATILLA FIAS

Intro

Fmaj⁹

Fm⁹

F^b9

A7^{(b}9)

Dm⁷

G7(#5)

Cmaj⁹

Fmaj⁹/G

G#m⁷/G

A⁵

C

C7/B^b

Am⁶

Fm(maj7)/G#

C⁹

C7/B^b

Am⁶

Fm(maj7)/G#

B¹³

C

C⁷

Fmaj⁷

Fm⁶

C¹⁷

Cmaj⁷

C⁷

Fmaj⁷

Fm⁶

C²¹

Cmaj⁷

C7/B^b

Am⁶

Fm(maj7)/G#

C²⁵

C

C7/B^b

Am⁶

Fm(maj7)/G#

D²⁹

C

C7/B^b

Am⁶

Fm(maj7)/G#

C³³

C

C⁷

Fmaj⁷

Fm⁶

D³⁷
Cmaj⁷

C7/B^b

Am⁶

Fm(maj7)/G#

D⁴¹
C

C7/B^b

Am⁶

Fm(maj7)/G#

45

Bb LEAD SHEET

The lead sheet consists of 12 systems, each with a key signature of Bb and a 4-measure chord progression. The systems are as follows:

- System 1: Chords C, C7, Fmaj7, Fm6. Staff line 49.
- System 2: Chords Cmaj7, C7/Bb, Am6, Fm(maj7)/G#. Staff line 53.
- System 3: Chords C, C7, Fmaj7, Fm6. Staff line 57.
- System 4: Chords Cmaj7, C7/Bb, Am6, Fm(maj7)/G#. Staff line 61.
- System 5: Chords C, C7/Bb, Am6, Fm(maj7)/G#. Staff line 65.
- System 6: Chords D3, C, C7/Bb, Am6, Fm(maj7)/G#. Staff line 69.
- System 7: Chords C, C7, Fmaj7, Fm6. Staff line 73.
- System 8: Chords Cmaj7, C7/Bb, Am6, Fm(maj7)/G#. Staff line 77.
- System 9: Chords D4, Cmaj7, C7/Bb, Am6, Fm(maj7)/G#. Staff line 81.
- System 10: Chords C, C7, Am6, Fm6. Staff line 85.
- System 11: Chords Cmaj7, C7/Bb, Am6, Fm(maj7)/G#. Staff line 89.
- System 12: Chords F, C, C7/Bb, Am6, Fm(maj7)/G#. Staff line 93.

Bb LEAD SHEET

Samba de Uma Nota So

ARRANGED FOR PERMUTAGAOS

ARRANGED BY:
NICK "BROWNMAN" ALI & ATILLA FIAS

Intro

Bm¹¹

C#m¹¹

D⁷sus⁴

E⁹sus⁴

Musical notation for the Intro section, measures 1-4. The staff shows a treble clef, a 4/4 time signature, and a repeat sign at the beginning. The notes are: measure 1 (rest), measure 2 (rest), measure 3 (rest), measure 4 (quarter note G4, quarter note A4, quarter note B4, quarter note C5).

A

Bm¹¹

C#m¹¹

D⁷sus⁴

E⁹sus⁴

Musical notation for section A, measures 5-8. The staff shows a treble clef and a 4/4 time signature. Measure 5 starts with a '5' below the staff. The notes are: measure 5 (quarter note G4, quarter note A4, quarter note B4, quarter note C5), measure 6 (quarter note G4, quarter note A4, quarter note B4, quarter note C5), measure 7 (quarter note G4, quarter note A4, quarter note B4, quarter note C5), measure 8 (quarter note G4, quarter note A4, quarter note B4, quarter note C5).

Bm¹¹

C#m¹¹

D⁷sus⁴

E⁹sus⁴

Musical notation for section A, measures 9-12. The staff shows a treble clef and a 4/4 time signature. Measure 9 starts with a '9' below the staff. The notes are: measure 9 (quarter note G4, quarter note A4, quarter note B4, quarter note C5), measure 10 (quarter note G4, quarter note A4, quarter note B4, quarter note C5), measure 11 (quarter note G4, quarter note A4, quarter note B4, quarter note C5), measure 12 (quarter note G4, quarter note A4, quarter note B4, quarter note C5).

F⁶/A

E^b/A

Dmaj⁷/A

B^bmaj⁷(^b5)/A B⁷sus⁴

Musical notation for section A, measures 13-16. The staff shows a treble clef and a 4/4 time signature. Measure 13 starts with a '13' below the staff. The notes are: measure 13 (quarter note G4, quarter note A4, quarter note B4, quarter note C5), measure 14 (quarter note G4, quarter note A4, quarter note B4, quarter note C5), measure 15 (quarter note G4, quarter note A4, quarter note B4, quarter note C5), measure 16 (quarter note G4, quarter note A4, quarter note B4, quarter note C5).

C#m

D⁷sus⁴

E⁷sus⁴

C⁷sus⁴

Musical notation for section A, measures 17-21. The staff shows a treble clef and a 4/4 time signature. Measure 17 starts with a '17' below the staff. The notes are: measure 17 (quarter note G4, quarter note A4, quarter note B4, quarter note C5), measure 18 (quarter note G4, quarter note A4, quarter note B4, quarter note C5), measure 19 (quarter note G4, quarter note A4, quarter note B4, quarter note C5), measure 20 (quarter note G4, quarter note A4, quarter note B4, quarter note C5), measure 21 (quarter note G4, quarter note A4, quarter note B4, quarter note C5).

B

Dm⁷

G/F

Em⁷

Dm⁷

Am⁷

A/G

Musical notation for section B, measures 22-25. The staff shows a treble clef and a 4/4 time signature. Measure 22 starts with a '22' below the staff. The notes are: measure 22 (quarter note G4, quarter note A4, quarter note B4, quarter note C5), measure 23 (quarter note G4, quarter note A4, quarter note B4, quarter note C5), measure 24 (quarter note G4, quarter note A4, quarter note B4, quarter note C5), measure 25 (quarter note G4, quarter note A4, quarter note B4, quarter note C5).

Cm⁷/G

F#dim

Gm/F

C/E

A^bmaj⁷

B^bmaj⁷(#11)

Musical notation for section B, measures 26-30. The staff shows a treble clef and a 4/4 time signature. Measure 26 starts with a '26' below the staff. The notes are: measure 26 (quarter note G4, quarter note A4, quarter note B4, quarter note C5), measure 27 (quarter note G4, quarter note A4, quarter note B4, quarter note C5), measure 28 (quarter note G4, quarter note A4, quarter note B4, quarter note C5), measure 29 (quarter note G4, quarter note A4, quarter note B4, quarter note C5), measure 30 (quarter note G4, quarter note A4, quarter note B4, quarter note C5).

C

E⁷sus⁴

F#m⁷

G⁷sus⁴

A⁷sus⁴

Musical notation for section C, measures 31-34. The staff shows a treble clef and a 4/4 time signature. Measure 31 starts with a '30' below the staff. The notes are: measure 31 (quarter note G4, quarter note A4, quarter note B4, quarter note C5), measure 32 (quarter note G4, quarter note A4, quarter note B4, quarter note C5), measure 33 (quarter note G4, quarter note A4, quarter note B4, quarter note C5), measure 34 (quarter note G4, quarter note A4, quarter note B4, quarter note C5).

Bm¹¹

C#m¹¹

D⁷sus⁴

E⁷sus⁴

Musical notation for section C, measures 35-38. The staff shows a treble clef and a 4/4 time signature. Measure 35 starts with a '34' below the staff. The notes are: measure 35 (quarter note G4, quarter note A4, quarter note B4, quarter note C5), measure 36 (quarter note G4, quarter note A4, quarter note B4, quarter note C5), measure 37 (quarter note G4, quarter note A4, quarter note B4, quarter note C5), measure 38 (quarter note G4, quarter note A4, quarter note B4, quarter note C5).

ALL RIGHTS RESERVED. PUBLISHED BY BROWNMAN MUSIC INC.
SOCAN/ASCAP, COPYRIGHT 2006

PERMUTAGAOS.BROWNMAN.COM BROWNMAN@BROWNMAN.COM

416-738-9449

Bb LEAD SHEET

To Coda ⊕

Musical staff 1 (measures 38-41):
Chords: F⁶/A, E^b/A, Dmaj⁷/A, B^bmaj⁷(^b5)/A, B⁷sus⁴

Musical staff 2 (measures 42-46):
Chords: Cmaj⁷, Fmaj⁷, Bm⁷, E⁷sus⁴, B^bmaj⁷(#11)

⊕ Coda

OPEN

Musical staff 3 (measures 47-50):
Chords: Cmaj⁷, Fmaj⁷, Bm⁷ E⁷sus⁴, B^bmaj⁷(#11)

on cue

Musical staff 4 (measures 51-54):
Chords: Cmaj⁷, Fmaj⁷, Bm⁷ E⁷sus⁴, B^bmaj⁷(#11)

Felicidade

BY: HENDRIK MEURKENS
ARRANGED BY: STEVE SACKS

Intro

B^b7sus⁴ C7sus⁴ B^b7sus⁴ C7sus⁴ E7(^b13,[#]9)

E^b7(^b13,[#]9) D7(^b13,[#]9) G[#]7(^b5,[#]9) G7(^b5,[#]9) F[#]7(^b5,[#]9) E[#]7sus⁴ E7sus⁴

E7sus⁴ F[#]7sus⁴ E7sus⁴ F[#]7sus⁴

A E7sus⁴ F[#]7sus⁴ E7sus⁴ F[#]7sus⁴

G[#]13(^b9) C[#]7(^b9) 1. C[#]m7(^b5) F[#]7(^b9) 2. C[#]m7(^b5) F[#]7(^b9) Em⁷ A⁷

B Dmaj⁷ Gmaj⁷ C[#]m7(^b5) F[#]7(^b9)

Bm⁷ Em⁷ F[#]m⁷ Gm⁷ A^bm⁷ B^bm⁷ E^b Am⁷ D⁷

Gmaj⁷ F[#]+⁷ E7sus⁴ E/D

C[#]m7(^b5) F[#]7(^b9) Bm⁷ E/B Bm⁷

Bb LEAD SHEET

C

Dmaj7/A **G/A** **Ddim(maj7)/A** **E^b7sus4**

D7sus4 **D7** **Gmaj7/D** **G6/D**

Em7 **A7** **F#m7** **B7** **G#m7(b5)**

G#m7(b5) **C#7(b9)** **Gm7** **C7** **C#m7(b5)** **F#7(b9)**

D

Bm7 **E7** **Am7** **To ⊕** **D7**

1.

Gmaj7 **C6** **C#m7(b5)** **F#7** **F#+7** **F6/9 (#11)**

2. 2nd ending on soloist cue

Gmaj7 **C#m7(b5)** **F#7** **F6/9 (#11)**

SOLOS: ABCD, soloist cues 2nd ending
After solos ABCD, Coda ⊕

Coda

E7(b13,#9) **E7(b13,#9)** **D7(b13,#9)** **A7(b5,#9)** **G7(b5,#9)** **F#7(b5,#9)**

FINE

Bb LEAD SHEET

Chega De Saudade

ARRANGED FOR PERMUTACAO S

slow bossa

ARRANGED BY:

NICK "BROWNMAN" ALI & ATTILA FIAS

A Em Em⁷/D F[#]7/C[#]

Cm⁶/B Em F[#]m⁷(b5) B⁷

Em C[#]m⁷(b5) F[#]7 Bm

B[#]maj⁷ C⁶ B⁷(b9)

B Em Em⁷/D F[#]7/C[#]

Cm⁶/B Em E⁷(b9)

Am B⁷ Em Em⁷/D

C[#]dim⁷ Cm⁶/B Em F[#]m⁷ B⁷

NEW TEMPO - perc break

Bb LEAD SHEET

SAMBA

41 Emaj7 C#7(#5)/F F#m7

45 B⁹sus4 B7 Edim7 Emaj7

49 G#m7 Gdim7 F#m7

53 F#9 Am6 B7

D Emaj7 C#m7 F#7

61 G#7 C#m7 B#m7 Bm7 E7

65 Amaj7 Am7 G#m7 C#13 C#7(#5)

69 3X F#9 B¹³sus4 G#m7 C#7(#5)

73 F#9 B⁹sus4 E6 B7(#5)

Bb LEAD SHEET

Água De Beber

ARRANGED FOR PERMUTACAO S

BY: ANTONIO CARLOS JOBIM

ARRANGED BY: NICK "BROWMAN" ALI & ATTILA FIAS

Intro

Musical notation for the Intro section, measures 1-5. The key signature is Bb and the time signature is 4/4. The notation includes a repeat sign at the beginning. Chords are indicated above the staff: Bm, Bm7/A, G#dim7, Bm, Bm7/A, G#dim7. The first measure includes the instruction "Flugel cues". Measure 5 has a "5" below the staff. The section ends with a double bar line and a repeat sign. Two endings are provided: 1. F#m11 and 2. Vox Bm7.

Verse

A

Musical notation for the Verse section, measures 6-25. The key signature is Bb and the time signature is 4/4. The notation includes a repeat sign at the beginning. Chords are indicated above the staff: C#7, F#7, Bm, Em, A7, D, C#7, Cdim, Bm, Bbdim, Am11, D7(#9)C#7(#9), C#m7(b5), F#7, Bm. Measure 10 has a "10" below the staff. Measure 14 has a "14" below the staff. Measure 18 has an "18" below the staff. Measure 22 has a "22" below the staff.

Chorus

B

Musical notation for the Chorus section, measures 26-33. The key signature is Bb and the time signature is 4/4. The notation includes a repeat sign at the beginning. Chords are indicated above the staff: E7, Em, Bm, E7, Em, Bm, F#m7(b5). Measure 26 has a "26" below the staff. Measure 30 has a "30" below the staff.

ALL RIGHTS RESERVED. PUBLISHED BY BROWMAN MUSIC INC.

SOCAN/ASCAP, COPYRIGHT 2006

PERMUTACAO S.BROWMAN.COM

BROWMAN@BROWMAN.COM

416-738-9449

www.browman.com