

Rock) 134.

# EIGHTY-ONE

MILES DAVIS  
RON CARTER

Handwritten musical notation for the first system. The top staff contains a melodic line with rhythmic markings above it:  $r\ 3\ 7$  and  $r\ 3\ 7$ . The first measure is marked with a circled 'A'. The bottom staff shows a chord progression:  $F7$  *mus 4*, followed by three measures with a slash and a vertical line, indicating a continuation of the previous measure.

Handwritten musical notation for the second system. The top staff has a melodic line with an accent (^) over the second measure. The bottom staff shows a chord progression:  $Bb7$  *mus 4*, followed by a slash and a vertical line, then  $F7$  *mus 4*, followed by a slash and a vertical line.

Handwritten musical notation for the third system. The top staff contains a melodic line with a long note in the first measure. The bottom staff shows a chord progression:  $C7$  *mus 4*,  $Bb7$  *mus 4*,  $Db$  *mus 4* /  $E$ , followed by a slash and a vertical line.

Handwritten musical notation for the fourth system, marked with a circled 'B'. The top staff has a melodic line with a flat (b) under the second measure. The bottom staff shows a chord progression:  $F7$  *mus 4*,  $Bb7$  *mus 4*,  $F7$  *mus 4*, followed by a slash and a vertical line.

Handwritten musical notation for the fifth system. The top staff has a melodic line with an accent (^) over the second measure and a flat (b) under it. The bottom staff shows a chord progression:  $Bb7$  *mus 4*, followed by a slash and a vertical line, then  $F7$  *mus 4*, followed by a slash and a vertical line.

Handwritten musical notation for the sixth system. The top staff contains a melodic line with a long note in the first measure. The bottom staff shows a chord progression:  $C7$  *mus 4*,  $Bb7$  *mus 4*,  $F7$  *mus 4*, followed by a slash and a vertical line.

"E C D"

408.

# STELLA BY STARLIGHT

-VICTOR YOUNG

Handwritten musical score for the jazz standard "Stella by Starlight" by Victor Young. The score is written on ten staves in treble clef with a key signature of one flat (Bb) and a 4/4 time signature. The music consists of a single melodic line with various chord changes indicated by handwritten annotations above and below the notes. The chords are: E-7 b5, A7 b9, C-7, F7, F-7, Bb7, Ebmaj7, Ab7, Bbmaj7, E-7 b5, A7 b9, D-7, Bb-7, Eb7, Fmaj7, E-7 b5, A7, A-7 b5, D7 b9, G+7, C-7, Ab7, Bbmaj7, E-7 b5, A7 b9, D-7 b5, G7 b9, C-7 b5, F7 b9, Bbmaj7.

MILES DAVIS - "MY FUNNY VALENTINE" "Miles in Concert"

(MED. SACS)

# SO WHAT

399.  
- MILES DAVIS

Handwritten musical notation for the first system. The top staff is in treble clef with a 4/4 time signature. The bottom staff is in bass clef. A double bar line with a scissor symbol above it is present. Chord annotations include "(BASS LINE BY)" and "D-7 (TORMAN)".

Handwritten musical notation for the second system, continuing the bass line and accompaniment.

Handwritten musical notation for the third system, featuring first and second endings marked "1." and "2.".

Handwritten musical notation for the fourth system, including the annotation "Eb-7 (DOR.)".

Handwritten musical notation for the fifth system, concluding with the instruction "D.S. al f".

Handwritten musical notation for the sixth system, starting with a treble clef and a double bar line. It includes the instruction "SOLOS ON ENTIRE FORM:" and a chord progression: "D-7 || Eb-7 || D-7".

# 'ROUND MIDNIGHT

COOTIE WILLIAMS & THELONIOUS MONK

## INTRO

A07 D7<sup>b9</sup> Ab7<sup>b9</sup><sub>5</sub>

RHYTHM

G07 C7<sup>b9</sup> Gb7<sup>b9</sup><sub>5</sub>

F07 Bb7<sup>b9</sup> E7<sup>b9</sup><sub>5</sub>

D TRIAD (E♭ in bass) EbΔ Bb7<sup>b9</sup>

♩ B♭<sup>ped</sup> Eb- Eb- Eb- C07 Ab-7 Db7 (C07 F7)

F7 (B-7 E7 Bb-7 Eb7) Ab-7 Db7 GbΔ G7 Ab7\*11

1 C07 B7<sup>alt</sup> F7 Bb7\*11 2 C07 F7 F07 Bb Bb7

EbΔ [B] C07 F7<sup>b9</sup> Bb7\*11 C07 F7<sup>b9</sup> Bb7\*11

# ROUND MIDNIGHT

Ab-7 F07 C07 F7b9 Bb-7 Eb7 Ab-7 Db7

Gb-7 Cb7 F07 Bb7b9 (C) Eb- Eb- D Eb- Db C07 Ab-7 Db7

C07 F7 B-7 E7 Bb-7 Eb7 Ab-7 Db7

GbΔ G7 Ab7\*11 C07 F7 F07/Bb Bb7 ⊕ Eb-Δ TO TAG AFTER HEAD

Tag after tag blowing  
 USE TAG FOLLOWING HEAD DO NOT USE AFTER SOLOS  
 DOUBLE TIME FEEL  
 (NO TAG AFTER SOLOS)

F07 Bb7\*9 Bb7\*9

DRUM FILL

## SOLOS - AABC

D.S. AL CODA

out of tenor solo  
 BREAK

RHYTHM - DOUBLE TIME LATIN FEEL

Eb- C07 F7b9

F#-7 B7b9 B-7 E7

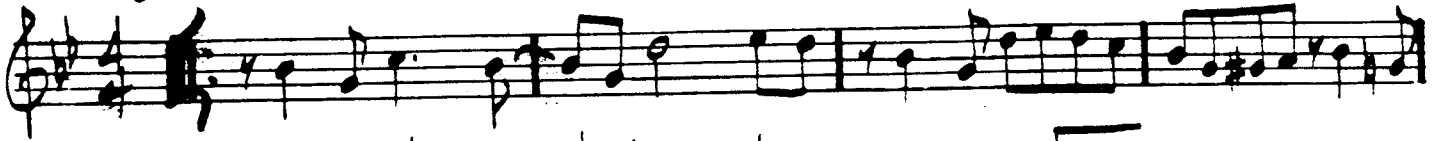
F07 Bb7\*11 Cadenza Abmi7 Eb-Δ

# OLEO

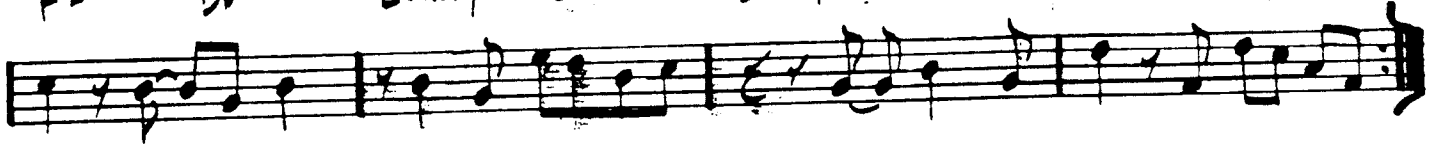
327.

- SONNY ROLLINS

**A** Bbmaj7 G7 C-7 F7 Bbmaj7 G7 C-7 F7



F-7 Bb7 Ebmaj7 Eb-6 Bbmaj7 G7 1. C-7 F7

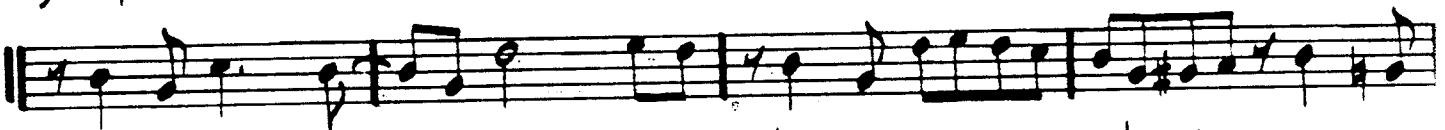


2. Bbmaj7

**B**



Bbmaj7 G7 C-7 F7 Bbmaj7 G7 C-7 F7



F-7 Bb7 Ebmaj7 Eb-6 Bbmaj7 G7 Bbmaj7



JOHN COLTRANE - "TRANE TRACKS"  
MILES DAVIS - "DAVIS"

(AABA)

308.  
(BALLAD)

# MY FUNNY VALENTINE

- ROGERS / HART

C- C-(maj7) C-7 C-6

Ab maj7 F-7 D-7 b5 G7 b9

C- C-(maj7) C-7 C-6

Ab maj7 F-7 Ab-6 Bb7 (b9)

Eb maj7 F-7 G-7 F-7 Eb maj7 F-7 G-7 F-7

Eb maj7 G7 C- Bb-7 A7 Ab maj7 D-7 b5 G7 b9

C- C-(maj7) C-7 C-6

Ab maj7 D-7 b5 G7 b9 C- Bb-7 A7 (#11)

Ab maj7 F-7 Bb7 (b9) Eb6 (D-7 b5 G7 b9)

C-concert leadsheet

# IN YOUR OWN SWEET WAY - DAVE BRUBECK

Handwritten musical score for the first chorus of "In Your Own Sweet Way". The score consists of eight staves of music with corresponding chord symbols written above the notes. The key signature is B-flat major (two flats). The first staff begins with a treble clef, a key signature change to B-flat major, and a common time signature. The music is written in a simple, melodic style characteristic of the original recording.

Chord symbols for the first chorus:

Staff 1: A-7 b5 D7 b9 G-7 C7 C-7 F7 Bb6 Ebmaj7

Staff 2: Ab-7 Db7 Gbmaj7 Cbmaj7 C-7 b5 F7 b9 1. Bbmaj7 #11 2. Bbmaj7 #11

Staff 3: E-7 b5 A7 b9 Dmin7 E-7 A7 Dmaj7

Staff 4: D-7 G7 Cmaj7 Eb-7 Ab7 G7

Staff 5: A-7 b5 D7 b9 G-7 C7 C-7 F7 Bb6 Ebmaj7

Staff 6: Ab-7 Db7 Gbmaj7 Cbmaj7 C-7 b5 F7 b9 Bbmaj7 #11

The score concludes with the word "FINE" written at the end of the eighth staff.

INTERLUDE BETWEEN EACH CHORUS:

Handwritten musical notation for the interlude. It features a single staff with a treble clef and a key signature of B-flat major. The notation is minimalist, consisting of a few notes and rests. A circled "8" is written below the staff, and the text "(Absus7)" is written above the first few notes. The word "D.S." is written at the end of the staff.

Dave Brubeck "Greatest Hits" D.S.



156.

(MED SWING)

# IF I WERE A BELL

F. LOESSER

Handwritten musical score for "If I Were a Bell" by F. Loesser. The score is written on ten staves in 4/4 time. It includes a melody line and a bass line with various chords. The chords are: G7, Gmi7, C7, FMaj7, Aø7, D7(b9), G7, Gmi7, C7, F7, Bb7, F7, A+7, Dmi7, Bmi7, E7, AMaj7, E7, AMaj7, D7, G7, Gmi7, C7, FMaj7, Aø7, D7(b9), G7, Gmi7, C7, F7, Bb7, Bø, F, E+7, Eb7, D7, Gmi7, C7, F, (D+7).

MILES — "MILES DAVIS"

# I FALL IN LOVE TOO EASILY

SAMMY CAHN  
JULE STYNE

Ballad

F m7   B $\flat$ 7   E $\flat$  $\Delta$ 7   C m7   D m7 $\flat$ 5   G 7 $\flat$ 9   C m7  
 D m7 $\flat$ 5   G 7 $\flat$ 9   C m7   D7   A $\flat$ 7 $\sharp$ 11   G $\Delta$ 7  
 A m7 $\flat$ 5   D7 $\sharp$ 9   G7   G m7   C7   F m7   C+7  
 F m7   B $\flat$ 9   D $\flat$ 7 $\sharp$ 11   C7   F m7   B $\flat$ 13   E $\flat$  $\flat$ 9



# FOUR

- MILES DAVIS

161.

3/4

1.

2.

(SOLO BREAK)

D.S.

(FINE)

MILES DAVIS - "FOUR & MORE"

# FOOTPRINTS

- WAYNE SHORTER

Handwritten musical notation for the first system. It consists of two staves. The top staff has a treble clef and a key signature of one flat (B-flat). The bottom staff has a bass clef. The first measure contains a C-7 chord. The second measure contains a B-flat7 chord. The third measure contains a B-flat7 chord. The fourth measure contains a B-flat7 chord.

Handwritten musical notation for the second system. It consists of two staves. The top staff has a treble clef and a key signature of one flat. The bottom staff has a bass clef. The first measure contains a C-7 chord. The second measure contains a B-flat7 chord. The third measure contains a B-flat7 chord. The fourth measure contains a B-flat7 chord.

Handwritten musical notation for the third system. It consists of two staves. The top staff has a treble clef and a key signature of one flat. The bottom staff has a bass clef. The first measure contains an F-7 chord. The second measure contains a B-flat7 chord. The third measure contains a B-flat7 chord. The fourth measure contains a B-flat7 chord.

Handwritten musical notation for the fourth system. It consists of two staves. The top staff has a treble clef and a key signature of one flat. The bottom staff has a bass clef. The first measure contains a C-7 chord. The second measure contains a B-flat7 chord. The third measure contains a B-flat7 chord. The fourth measure contains a B-flat7 chord.

Handwritten musical notation for the fifth system. It consists of two staves. The top staff has a treble clef and a key signature of one flat. The bottom staff has a bass clef. The first measure contains a D7 chord. The second measure contains a D7 chord. The third measure contains a D-flat7 chord. The fourth measure contains a D-flat7 chord.

Handwritten musical notation for the sixth system. It consists of two staves. The top staff has a treble clef and a key signature of one flat. The bottom staff has a bass clef. The first measure contains a C-7 chord. The second measure contains a B-flat7 chord. The third measure contains a B-flat7 chord. The fourth measure contains a B-flat7 chord.

(FAST SWING)

# E.S.P.

- MILES DAVIS

141.

Handwritten musical notation for the first system. The top staff contains a melody with eighth and quarter notes. The bottom staff shows chords: E7 alt., F minor, and F minor. A fermata is placed over the final note of the melody.

Handwritten musical notation for the second system. The top staff continues the melody. The bottom staff shows chords: E7 alt., E minor, and E minor. A fermata is placed over the final note of the melody.

Handwritten musical notation for the third system. The top staff continues the melody. The bottom staff shows chords: D7 alt., Eb7 #11, E7 #9, and F minor Eb7. A fermata is placed over the final note of the melody.

Handwritten musical notation for the first ending. The top staff contains the melody. The bottom staff shows chords: D7, G7, G7, and F#7. A first ending bracket is indicated above the staff.

Handwritten musical notation for the second ending. The top staff contains the melody, including a triplet of eighth notes. The bottom staff shows chords: D7 #11, C9, D7, Gb7, and F7. A first ending bracket is indicated above the staff.

MILES DAVIS - "E.S.P."

(Guitar)

# ALL OF YOU

- COLE PORTER

Ab-6 Ebmaj7 F-7 b5 Bb7 b9

Ab-6 Ebmaj7 F-7 b5 Bb7

Eb6/G Gb0 F-7 Bb7

Ebmaj7 D7 G-7 b5 / Db C7 F-7 Bb7

Ab-6 Ebmaj7 F-7 (b5) Bb7 b9

Ab-6 Ebmaj7 G-7 C7

Abmaj7 A-7 b5 D7 b9 G-7 C7 (b9-1 / 4-3)

F-7 C7 F-7 Bb7 Eb6 F-7

BILL EVANS - "LIVE AT THE VILLAGE VANGUARD" (FINE)  
 "M'COM TYNER AT NEWPORT"

# ALL BLUES

- MILES DAVIS

Handwritten musical notation for the first system of 'All Blues'. It consists of two staves. The top staff is in treble clef with a key signature of one flat (Bb) and a 12/8 time signature. It contains three measures of music: a dotted quarter note followed by an eighth note, a quarter note, and a dotted quarter note. The bottom staff is in bass clef and contains three measures of accompaniment. The first measure is labeled with a G7 chord and contains a quarter note, a dotted quarter note, and a quarter note. The second and third measures contain rests, indicated by a double slash with a diagonal line through it.

Handwritten musical notation for the second system of 'All Blues'. It consists of two staves. The top staff is in treble clef and contains three measures of music: a dotted quarter note, a quarter note, and a dotted quarter note. The bottom staff is in bass clef and contains three measures of accompaniment. The first measure contains a rest. The second measure is labeled with a C7 chord and contains a quarter note, a dotted quarter note, and a quarter note. The third measure contains a rest.

Handwritten musical notation for the third system of 'All Blues'. It consists of two staves. The top staff is in treble clef and contains three measures of music: a dotted quarter note, a quarter note, and a dotted quarter note. The bottom staff is in bass clef and contains three measures of accompaniment. The first measure is labeled with a G7 chord and contains a quarter note, a dotted quarter note, and a quarter note. The second measure contains a rest. The third measure is labeled with a D7(#9) chord and contains a dotted quarter note.

Handwritten musical notation for the fourth system of 'All Blues'. It consists of two staves. The top staff is in treble clef and contains three measures of music: a dotted quarter note, a quarter note, and a dotted quarter note. The bottom staff is in bass clef and contains three measures of accompaniment. The first measure is labeled with Eb7(#9) and D7(#9) b9 chords and contains a dotted quarter note. The second measure is labeled with a G7 chord and contains a quarter note, a dotted quarter note, and a quarter note. The third measure contains a rest.

MILES DAVIS - "KIND OF BLUE"



# LEAD SHEET

# Agitation

♩=300

COMPOSED & ARRANGED BY :  
MILES DAVIS

**A** Cm

5

**Melody is loose... it shouldn't be super tight.**

**Bass - Play B whenever the fuck you want.**

**Drums - change tempos whenever the fuck you want.**

**This tune should be totally about exploration & trying shit.**

**B** G7 A<sup>b</sup>7

9