

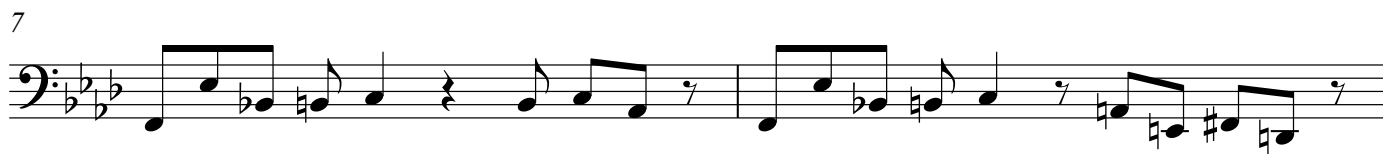
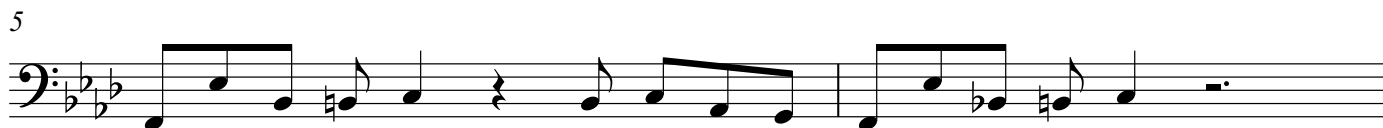
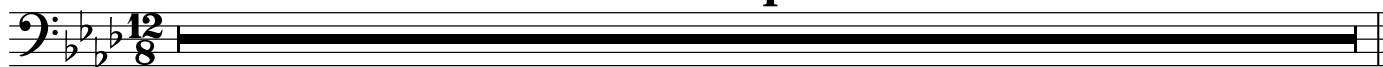
Situaciones en 12/8

Electric Bass

Dayramir Gonzalez

Intro

4



Intro 9



A



Electric Bass

26 2.

29 B

F#% Am¹¹ Bm¹¹ G% B% Gmaj7 Bb(#11)

P

34 Am⁷ Bbmaj7(#11) Ab7(add13)

36

40

42

44

48 C Solos

Fm⁷ Fm⁷ on cue to bridge

51 Bridge

Fm7(add11) Fm7(add11) Fm7(add11) Fm7(add11)

55 Gb% Ab7(add13) Bb7(add13) B%

ff

59 **D** Perc solos

Musical notation for measures 59 and 60. The key signature has three flats (B-flat, E-flat, A-flat). Measure 59 starts with a repeat sign and contains a series of eighth notes with slurs. Measure 60 continues the pattern with a final eighth note and a repeat sign.

61

Musical notation for measure 61, continuing the eighth-note pattern from the previous measures.

63 **D5** Coros

Musical notation for measures 63 and 64. Measure 63 includes a repeat sign and a slur. Measure 64 continues the eighth-note pattern.

66 1. 2.

Musical notation for measures 66 and 67. Measure 66 has a first ending bracket. Measure 67 has a second ending bracket.

68 **D10** Horns open conterpoint

Musical notation for measures 68 and 69. Measure 68 includes a repeat sign and a slur.

70

Musical notation for measure 70, continuing the eighth-note pattern.

72 Coda

Musical notation for measures 72, 73, and 74. Measure 72 starts with a repeat sign and contains a series of eighth notes with slurs.

75

Musical notation for measure 75, featuring a slur and an accent mark (>) over a group of notes.

78

Musical notation for measure 78, featuring a slur and an accent mark (>) over a group of notes.