

Easy To Love

(from "Born To Dance")

Cole Porter

Freely or Med. Ballad

(Verse) B \flat MA \flat ⁷

GMI^(MA \flat 7)

GMI⁷

B \flat MA \flat ⁹

GMI⁷



I know too well that I'm just wast - ing pre - cious time in

CMI⁷

F⁷

B \flat MA \flat ⁷

CMI⁷

F^{7(b9)}



think - ing such a thing could be, That you could ev - er care for me.

B \flat MA \flat ⁷

F^{7(b9)}

F⁹

B \flat MA \flat ⁷

GMI⁷



I'm sure you hate to hear That I a - dore you, dear, But

DMA⁷

GMA⁷

EMI⁷ A⁷

D⁶ rit. E \flat ⁷



grant me, just the same, I'm not en - tire - ly to blame, for

(Medium Up or Med. Ballad)

(A \flat MI⁶)

BMI^{7(b5)}

)



You'd be so eas - y to love, So

GMA⁷

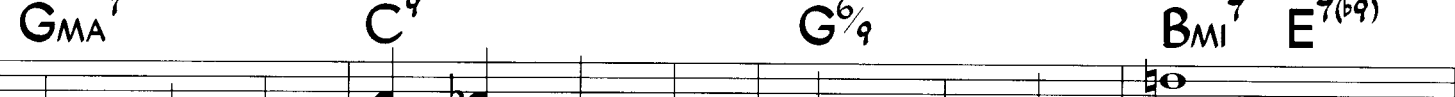
(A \flat MI⁷)

D⁹_{SUS} D^{7(b9)}

BMI⁷

B \flat ⁷

)

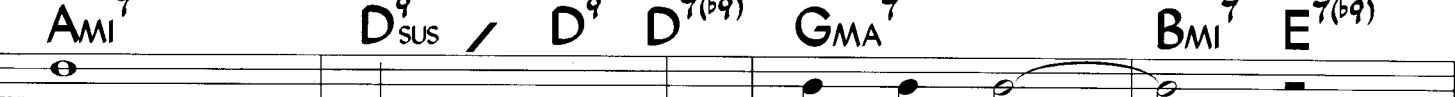


eas - y to i - do - lize, all oth - ers a - bove,

(D⁷)

C^{9(#11)}

)

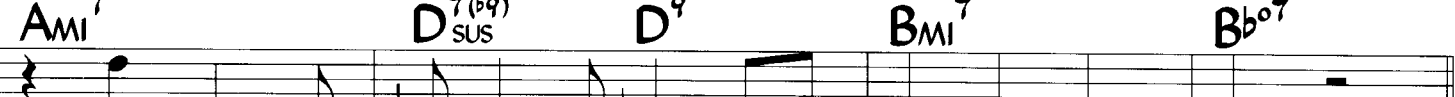


So worth the yearn - ing for,

(E \flat ⁷)

D⁹

)



So swell to keep ev - 'ry home fire burn - ing for.

B (A_{MI}⁶ A_{MI}⁷ B_{MI}^{7(b5)} D_{MI}⁷ E^{7(b9)} A_{MI}⁷ D⁷)

We'd be so grand at the game, So

G_{MA}⁷ (A_{MI}⁷ / C⁹ D_{SUS}⁹ D^{7(b9)} G⁶ B_{MI}⁷ B_{MI}⁷ E_{SUS}⁷ E^{7(b9)})

care - free to - geth - er, that it does seem a shame, That

A_{MI}⁷ (C_{MI}⁷ F⁹ B_{MI}⁷ G_{MA}⁷ (C^{9(#11)} B_{MI}⁷ (B^b_{MI}⁷ B^b₇))

you can't see Your fu - ture with me, 'Cause you'd be

A_{MI}⁷ (D_{SUS}⁹ D^{7(b9)}) G⁶ (B_{MI}^{7(b5)} E^{7(b9)})

oh, so eas - y to love! **(fine)** Solo on AB
After solos, D.S. al fine

Originally written: (note bars 3 & 7)

A A_{MI}⁷ D_{MI}⁷ E^{7(b9)} A_{MI}⁷ D⁷ G_{MA}⁷ C⁹

G^{6/9} B_{MI}⁷ E^{7(b9)}

(similar in Letter **B**)