

Brownman Ali, Browntasaurus Records, CONTXT & Caliban Arts Theatre presents:

BLUE NOTE SOUNDS

Sat-Dec-30, 2023 -- 7pm @ CONTXT, Toronto

:: Brownman Ali – trumpet
:: Jacob Chung – tenor
:: Eric Liang – piano
:: Bennett Young – bass
:: Frank Botos – drums

TUNE LIST

SET 1

- 01 – **Cantaloupe Island** (Herbie Hancock, Empyrean Isles, '64)
- 02 – **Gingerbread Boy** (Blue Mitchell, Bring It Home to Me, '67)
- 03 – **Song for My Father** (Horace Silver, Song for my Father, '65)
- 04 – **Love for Sale** (Cannonball Adderley, Something Else, '58)
- 05 – **Fee-Fi-Fo-Fum** (Wayne Shorter, Speak No Evil, '64)
- 06 – **Passion Dance** (McCoy Tyner, The Real McCoy, '67)
- 07 – **Witchhunt** (Wayne Shorter, Speak No Evil, '64)
- 08 – **Dolphin Dance** (Herbie Hancock, Maiden Voyage, '65)
- 09 – **Byrdlike** (Freddie Hubbard, Ready For Freddie, '62)

SET 2

- 10 – **Softly** (Larry Young, Unity, '66)
- 11 – **This Is for Albert** (Art Blakey & The Jazz Messengers, Caravan, '63)
- 12 – **Sidewinder** (Lee Morgan, Sidewinder, '64)
- 13 – **This I Dig Of You** (Hank Mobley, Soul Station, '60)
- 14 – **Night & Day re-harm** (Joe Henderson, Inner Urge, '66)
- 15 – **Serenity** (Joe Henderson, In'n Out, '65)
- 16 – **Moontrane** (Larry Young, Unity, '66)
- 17 – **Night In Tunisia** (Kenny Dorham, Round Midnight at the Cafe Bohemian, '57)
(Blakey Jazz Messengers, Night In Tunisia, '61)
(Dexter Gordon, Our Man In Paris, '63)
- 18 – **Moment's Notice** (John Coltrane, Blue Train, '58)



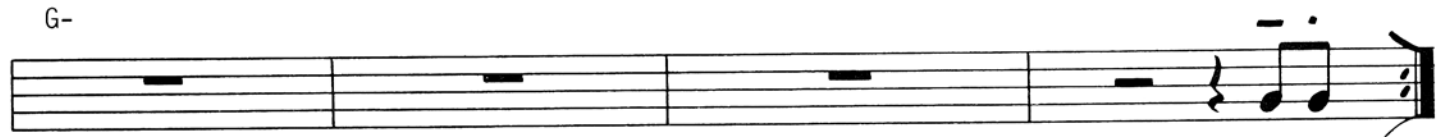
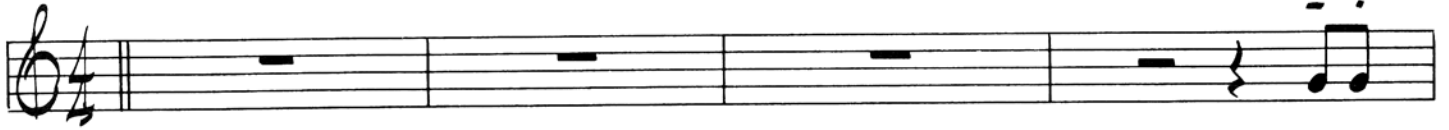
Cantaloupe Island

Bb

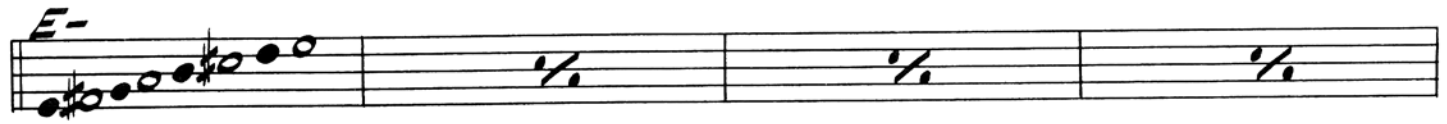
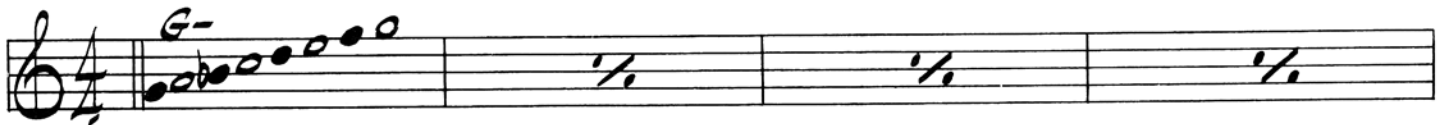
By Herbie Hancock

INTRO

MELODY



SOLOS



ENDING FADES OUT
ON G-

Bb

(MED. SWING)

GINGER BREAD BOY

- JIMMY HEATH

C⁷ C⁷9

F⁷ F⁷9 F⁷ C⁷9

C⁷ A⁷ NC

D⁷ G⁷ NC C⁷9

1. 2.

REPEAT 1ST ENDING
[SOLD OVER C BLUES]

TRUMPET

Love For Sale

BY: COLE PORTER
ARR. BROWMAN ALI
(FOR ORI DAGAN)

Intro Cmaj⁹

Gm⁷

Cmaj⁹

Gm⁷

A

Fmaj⁷

Cm⁷

Fmaj⁷

Cm⁷

13

Fm⁷

B^b9

E^bmaj⁷

E^b7(#9)

A^b9

17

Dm7(b5)

G7(b9)

Cm⁶

21

B

Fm⁷

B^b7(b9)

E^bmaj⁹

Gm⁷

C7(b9)

25

Fm⁷

B^b7(b9)

E^bmaj⁹

28

Gm⁷

C#9 C7

Fm⁶

3

33

Am7(b5)

D7(b9)

Gm7(b5)

C7(b9)

37

A

Fmaj⁷

Cm⁷

41

Fmaj⁷

Cm⁷

45

Fm⁷

B^b9

E^bmaj⁷

E^b7(#9)

A^b9

49

Dm7(b5)

G7(b9)

Cm⁶

53

FEE - FI - FO - FUM

149.
- WAYNE SHOOTER

Handwritten musical notation for the first system. The top staff is in treble clef with a key signature of one flat (Bb) and a 4/4 time signature. The melody consists of quarter and eighth notes with various accidentals. The bottom staff shows the chord progression: F7, E7#9, A7, Bb7, C#7, E7, E7, A7.

Handwritten musical notation for the second system. The top staff continues the melody. The bottom staff shows the chord progression: F7, E7#9, A7, Bb7, Ab7, G7, C7.

Handwritten musical notation for the third system. The top staff continues the melody. The bottom staff shows the chord progression: F7, a whole rest, C7, and a whole rest.

Handwritten musical notation for the fourth system. The top staff continues the melody. The bottom staff shows the chord progression: F7, a whole rest, C7, F7, B7, E7.

Handwritten musical notation for the fifth system. The top staff continues the melody. The bottom staff shows the chord progression: F7, E7#9, A7, Bb7, C#7, E7, E7, A7.

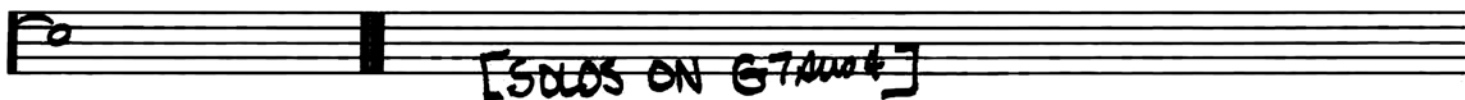
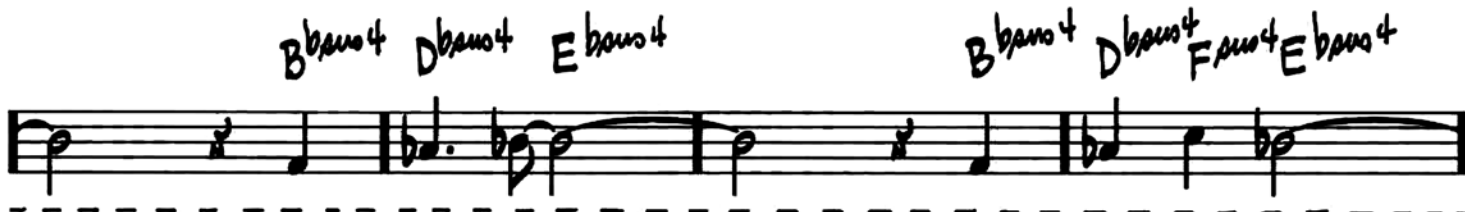
Handwritten musical notation for the sixth system. The top staff continues the melody. The bottom staff shows the chord progression: F7, E7#9, D7, C#7, and a whole rest.

(MED. UP)

PASSION DANCE

-McCOY TYNER

G7sus4



(JAZZ)

WITCH HUNT

- WAYNE SHORTER

INTRO

N.C.

Fmaj7 Gmin7 N.C.

Amin7 Emin7 N.C.

Musical notation for the Intro section. It consists of two staves. The first staff is in treble clef and contains a series of eighth-note triplets and pairs of eighth notes. The second staff is in bass clef and contains a similar rhythmic pattern. Chords are written above the notes: Fmaj7, Gmin7, Amin7, Emin7, Bmin7, C#min7, Abmin7, Bbmin7, and Ebmin7. There are also triplets and a circled '3' over some notes. The section ends with a double bar line.

(IN TIME)

Musical notation for the HEAD section. It consists of two staves. The first staff is in treble clef and contains a series of eighth-note patterns. The second staff is in bass clef and contains a similar rhythmic pattern. Chords are written above the notes: D-7, A7#9, D-7, A7#9, D-7, F7, A7#9, D-7, Ab7, G7, F#7, F7, Bb-7, Bmin7/Bb, Bb-7, Bmin7/Bb, A7#5(#9), Bb-7, Bb-11, and AFTER SOLOS, D.S. AL. The section ends with a double bar line.

RIT.

Bb

DOLPHINE DANCE

-HERSIE HANCOCK

[HERB. JAZZ] FΔ7 C-7 FΔ E-7b5 A7

D-7 Bb7 D-7 B-7 E7

AΔ7 Bb-7 Eb7 G-7 C7

D-7 D-7/C B-7 E7

AΔ7 A7sus4 B/A A7sus4

G7sus4 A/C G7sus4 F#-7 B7

F7 B-7 E7 C#-7 F#7 E-7

D#-7 G#7 C#-7/F# B-/F#

C-7/F C7(b9)/F BbΔ+5/F E-7b5 A7b9

Byrdlike

COMPOSED BY: FREDDIE HUBBARD
ARRANGED BY: BROWMAN

Intro

trumpet
cybal hits
tenor
B7alt E7alt
sim...

cybal sim...
tenor sim...
A7alt D7alt
sim...

trumpet/tenor/drums only
drum fill

10

HEAD

G7 C7 G7 B7

14

C7 Bm7 E7 Bbm7 Eb7

18

Am7 (Eb9) D7 G7 E7 Am7 D7

22

Bb

(MED.) SOFTLY AS IN A MORNING SUNRISE

-SIGMUND ROMBERG/OSCAR HAMMERSTEIN II

D-7 E-7b5 A7b9 D-7 E-7b5 A7b9 D-7

E-7b5 A7b9 D-7 | 1. E-7b5 A7b9 | 2. G-7 C7

Fmaj7 D7b9

G-7 G#o7 A7b9 E-7b5 A7b9

D-7 E-7b5 A7b9 D-7 E-7b5 A7b9

D-7 E-7b5 A7b9 D-7 (E-7b5 A7b9)



This Is For Albert

Play 6 Choruses
♩=194

NOTE: FOR COMBO USE, HARMONY PARTS (CONCERT KEY)
ARE LOCATED ON PAGE 20.

INTRO
(RHY.) AD BbΔ⁺⁴ B- A7b9 D- G7b9 CD C- BbΔ E7+9
PEDAL A - - - - -

MELODY
AD BbΔ⁺⁴/A B-/A E-/A A7b9 D- G7b9
PEDAL A - - - - -

CD C-/F BbΔ > > E7+9 > Bb-/Eb (PEDAL Eb)
Bb-/Eb AD⁺⁴/D# C#-(WALK) F#7+5

B- > > E7b9 AD BbΔ⁺⁴/A B-/A
E-/A A7b9 D- G7b9 CD C-/F BbΔ > > E7+5 > ⊕

SOLOS
AD BbΔ⁺⁴/A B-/A E-/A A7b9 D- G7b9 CD C-/F
PEDAL A - - - - -

BbΔ E7+9 Bb-/Eb AD⁺⁴/D#
PEDAL Eb - - - - -

(WALK) C#- F#7+5 B- E7b9 AD BbΔ⁺⁴/A
PEDAL A - - - - -

B-/A E-/A A7b9 D- G7b9 CD C-/F BbΔ E7+5

⊕ Bb-/Eb > F#7/B

SIDEWINDER

- LEE MORGAN

(SOUL JAZZ)

E7 F7

E7 F7

BASS & RHYTHM - CONTINUE SIMILE

(Bb7) A7 Bb7

(F7) E7 F7 A-7b5 D7b9

G- A7/D G7/C F7

(F7) E7 F7 F7 N.C.

(ENDING)

PLAY HEAD 2x IN/OUT

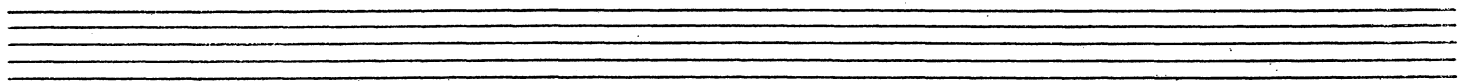
E7 F7

VAMP TO FADE OR CUE

THIS I DIG OF YOU

HANK NOBLEY

Handwritten musical score for "THIS I DIG OF YOU" by HANK NOBLEY. The score is written on ten staves. The first staff begins with a treble clef and a 4/4 time signature. The music is annotated with various chords, including C Major 7, D minor 7, E minor 7, D minor 7, E-flat Major 7, D minor 7, E minor 7, G minor 7, C 7, F Major 7, F# minor 7, B 7, E minor 7, A 7, E-flat minor 7, A-flat 7, D minor 7, G 7, C Major 7, D minor 7, E minor 7, D minor 7, E-flat Major 7, D minor 7, E minor 7, G minor 7, C 7, F Major 7, F# minor 7, B 7, E minor 7, A 7, D minor 7, G 7, and C Major 7. The notation includes eighth and quarter notes, rests, and bar lines.



TRUMPET

Night & Day

Joe Henderson Re-harm

COLE PORTER
RE-HARM BY :
JOE HENDERSON

INTRO - OPEN

Dmaj⁷ Cmaj⁷ Dmaj⁷ Cmaj⁷

A B^bmaj⁷ A⁷alt Dmaj⁷ Cm⁷ F⁷

B^bmaj⁷ A⁷alt Dmaj⁷ Em⁷ A⁷

G[#]m⁷(^b5) Gm⁷ F[#]m⁷ Fdim⁷

Em⁷ A⁷ Cm⁷ F⁷ B^bmaj⁷ A⁷ 1. Dmaj⁷ Cm⁷ F⁷ 2. Dmaj⁷

B Fmaj⁷ Dmaj⁷

Fmaj⁷ Dmaj⁷

G[#]m⁷(^b5) Gm⁷ F[#]m⁷ Fdim⁷

Em⁷ A⁷ B^bm⁷ E^b7 Dmaj⁷ Cm⁷ F⁷

TRUMPET

Serenity

From "In'n Out" - 1964

JOE HENDERSON

$\text{♩} = 160$

Em7(b5) A7(#9) Bbmaj(#11) Abmaj(#11) F#m7 B7

The first system of the trumpet part consists of two staves. The top staff contains the melody, starting with a double bar line and a repeat sign. The bottom staff contains the accompaniment. Chord symbols are placed above the staff: Em7(b5), A7(#9), Bbmaj(#11), Abmaj(#11), F#m7, and B7. The key signature has one flat (Bb) and the time signature is 4/4.

Gm7 C7 F Em7(b5) A7 Dm7 Bbm7 Eb7

The second system of the trumpet part consists of two staves. The top staff contains the melody, featuring triplets. The bottom staff contains the accompaniment, with the word "WALK" written below the staff. Chord symbols are placed above the staff: Gm7, C7, F, Em7(b5), A7, Dm7, Bbm7, and Eb7. The key signature has one flat (Bb) and the time signature is 4/4.

A7(#5) Ab G7 G7 F#maj7(#11) Gm7(b5) C7(#9) TO CODA

The third system of the trumpet part consists of two staves. The top staff contains the melody. The bottom staff contains the accompaniment. Chord symbols are placed above the staff: A7(#5), Ab, G7, G7, F#maj7(#11), Gm7(b5), and C7(#9). The text "TO CODA" is written above the staff. The key signature has one flat (Bb) and the time signature is 4/4.

F Em7(b5) A7(#9)

The fourth system of the trumpet part consists of two staves. The top staff contains the melody. The bottom staff contains the accompaniment. Chord symbols are placed above the staff: F, Em7(b5), and A7(#9). The key signature has one flat (Bb) and the time signature is 4/4.

CODA

F E F

The CODA section consists of a single staff. It contains the final notes of the piece. Chord symbols are placed above the staff: F, E, and F. The key signature has one flat (Bb) and the time signature is 4/4.

MOONTRANE

WOODY SHAW

12 BAR INTRO:

C Maj⁷ (#11)

A NIGHT IN TUNISIA

JOHN "DIZZY" GILLESPIE / FRANK PAPARELLI

(MED. PERC.)

INTRO

F7

E-

(BASS)

Section A: F7, E-, F7, E-

Section A: F7, E-, F#-7b5, B7b5, E-, E-

Section B: B-7b5, E7b9, A-6, E7b9, A-6

Section B: A-7b5, D7b9, G6, F#-7b5, B7b5

Section C: E-, F#-7b5, F7#11, D.S. AL

Section C: E-, A7#11

Section C: A-(maj7), A-7, Ab7#9

Section C: A-(maj7), A-7, Ab7#9

Section C: A-(maj7), A-7, Ab7#9

(SOLO BREAK)

SOLO [A][A][B][A]
AFTER SOLOS, D.S. AL FINE
(TAKE REPEAT)

MOMENTS NOTICE

- COLTRANE

(UP)

F#-7 B7 G-7 C7 F#7 Bb-7 Eb7

E7 A7 F-7 Bb7 Eb7(#11) E-7 A7

D-7 C#7 b9 C-7 F7 Bb7 Eb-7 Eb7

A-7 D7(b13) B-7 Eb7 Abo G-7 E7

A-7 D7(#4) G-7 C7 F9 G-7

A-7 G-7 F9 E-7 A-7 G-7

F G-7 E7

JOHN COLTRANE - "BLUE TRANE"

