

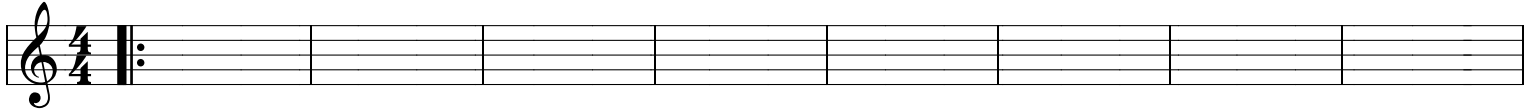
DRUMS

Anaconda

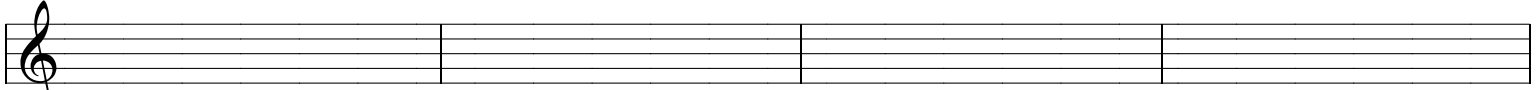
♩=250

COMPOSED & ARRANGED BY :
BROWNMAN ALI

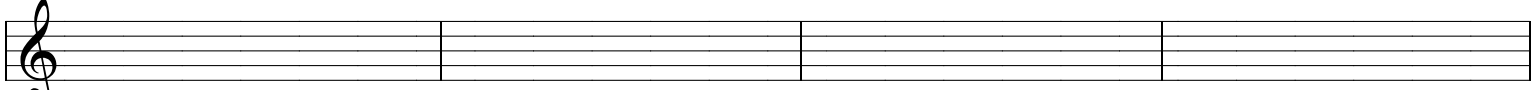
Fm



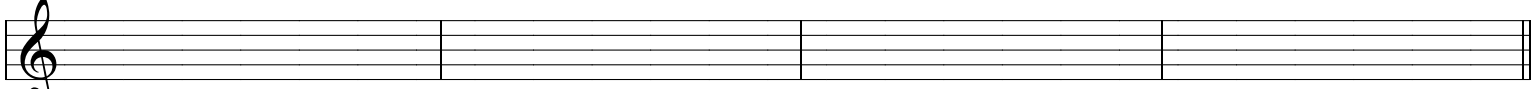
A1⁹ Fm Cm7/E^b
Fm Gdim7 C7(♭9)



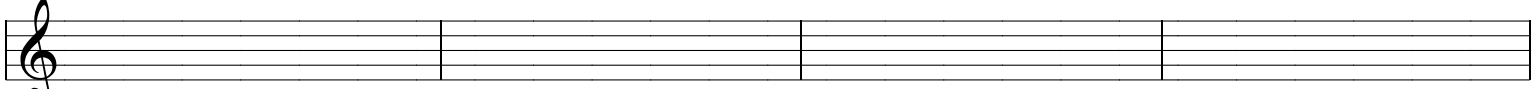
²¹ Fm Cm7/E^b



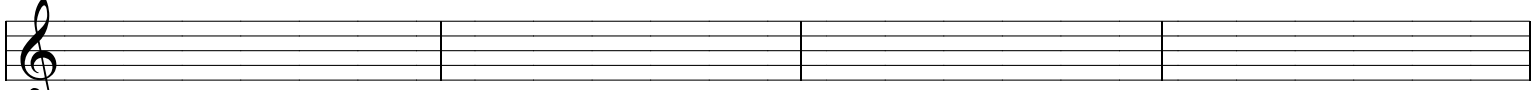
²⁵ Fm7 A^b7sus4 B^bm9 C7(♭9)



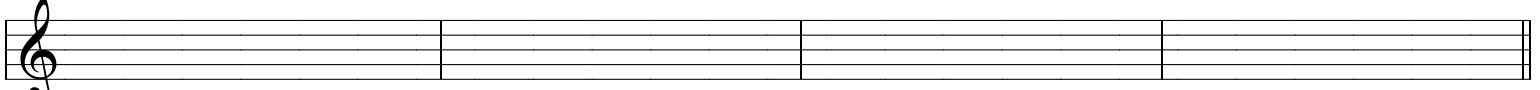
A2²⁹ Fm Cm7/E^b
³³ Fm Gdim7 C7(♭9)



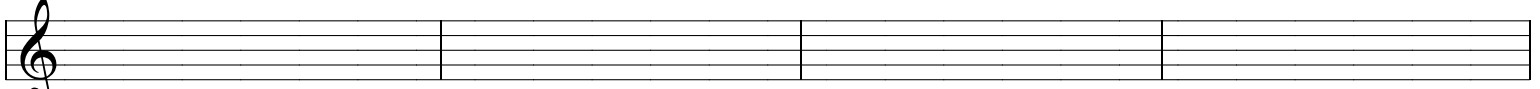
³⁷ Fm Cm7/E^b



⁴¹ Fm7 A^b7sus4 B^bm9 C7(♭9)



B⁴⁵ E^b
⁴⁹ D^b E^b F



⁵³

DRUMS

57 **E^b** **A^b7**

57 **B^b maj7** **F7** **Csus4** **C7**

61 **A3** **Fm** **Cm7/E^b**

65 **Fm** **Gdim7** **C7(♭9)**

69 **Fm** **Cm7/E^b**

73 **Fm7** **A^b7sus4** **B^bm9** **C7(♭9)**

77

CODA SOLOS OVER AABA, Play head again w/ Coda

81 **Fm7** **A^b7sus4** **B^bm9** **C7(♭9)**

85 **Fm7** **A^b7sus4** **B^bm9** **C7(♭9)**

89 **Fm7** **A^b7sus4** **B^bm9** **C7(♭9)**

93 **Fm7** **A^b7sus4** **B^bm9** **C7(♭9)**

OPEN **On Cue**

Fm7 **A^b7sus4** **B^bm9** **C7(♭9)** **Fm7** **A^b7sus4** **B^bm9** **C7(♭9)**

Conducted (No drums)

105